



## President's Message

Welcome Back! I'm not quite sure where this summer has gone. The CEC took a much needed break over the summer but came back in full force in August. We welcomed new board members Jenny Wall (also a new member) and Daniel Durbin to our CEC filling the positions of Membership Chair and Community Services Chair. We are still missing a program director, however so if anyone is willing to chip in, it would be greatly appreciated.



As president this year, I am implementing a few changes that you will be seeing soon. Our first change this year is the way in which we communicate to you. Previously, we provided a monthly newsletter detailing all our information. Going forward, we will be providing a quarterly newsletter with all of our information. Then on a monthly basis, we will be sending out a mini-letter of information and changes to our schedule. We hope this allows you to find out what is going on without wading through a mountain of paper.

We have also begun quarterly CEC meetings as opposed to monthly. Meetings will be held in the Hoover building for those on the complex, but those in other buildings or cities can meet via conference call. My goal in this is to ensure our board can discuss those items important to us, but not take as much time away from our offices. I am also hopeful this will help eliminate the "I have no time to meet" excuse from the list of reasons people cannot serve on the CEC. There will be other changes throughout the program year, but they will be announced at monthly meetings and in the mini-letters, so stay tuned.

We kicked off our program year on August 24<sup>th</sup> with an audio conference. We purchased 12 audio conferences this year from AGA. A schedule of these is included in the newsletter. In addition to the audio conferences, we will have 8 lunch-n-learns, 1 evening awards meeting, and 1 seminar. This provides an opportunity to earn 39 hours of continuing education....one hour shy of 40....I'll work on that.

I have met so many of you at conferences, lunch-n-learns, etc. But for those of you who don't know me, I am the lead accountant at the Department of Human Services. I work with many departments throughout State Government in the course of my daily work. And have had the privilege of working with many more as a member of the CEC. As President, a lack of a program director means I will be developing our program year. And, while I have worked with so many people, I have by no means conquered all of the ins and outs of government. If you have any suggestions or areas you would like to learn more about, please don't hesitate to contact me. My door is open to program ideas or general ideas for ways AGA can be successful. I can be reached at [nstorm@dhs.state.ia.us](mailto:nstorm@dhs.state.ia.us) or 515-281-8047.

Final thoughts....I was told when I agreed to be President that the President's message in the newsletter could be short....I'll work on that for next time.

I hope everyone enjoyed their summer and we look forward to seeing you at our upcoming events!  
**Natalie Storm, Des Moines Chapter President**

## Upcoming Events!!

**Ola Babcock Miller Bldg.  
State Library of Iowa  
Des Moines, IA**

**Wed., Sept 28, 2011**

### Lunch 'n Learn

**11:30 - 1:00**

**"Impact of Budget Reductions on DHS  
and the Resulting Redesign"**

Recommended CPE: 1 Hr

### Audio Conference

**1:00 - 3:00**

**"Continuous Monitoring —  
Management's Window to Preventing  
Fraud, Waste and Abuse"**

Recommended CPE: 2 Hrs

## Inside this Issue:

Chapter Executive Committee...	2
CEC Meeting Minutes.....	2
CGFM Study Guides.....	3
Member Recognition.....	3
Community Service.....	4
Chapter Financials.....	5
Training Calendar.....	6



## Chapter Executive Committee

### Chapter President

Natalie Storm, CPA  
nstorm@dhs.state.ia.us  
Department of Human Services

### President-Elect & Chapter Recognition Chair

Deb Schroeder  
schroeder@northpolk.org  
North Polk Community School District

### Immediate Past President

Patricia Townsend, CPA  
patricia.townsend@iowa.gov  
Iowa Communications Network

### Secretary

Khristan Kaufman, CPA, CFE  
khristan.kaufman@ia.usda.gov  
USDA, GIPSA, & P&SP

### Treasurer

Natalie Storm, CPA  
nstorm@dhs.state.ia.us  
Department of Human Services

### Accountability Outreach Chair

Janice Jensen, CPA, CGFM  
janice.jensen@iowa.gov  
Iowa Vocational Rehabilitation

### By-Laws & Procedures Director & Historian

Janice Evans, CPA, CGFM  
janice.evans@iowa.gov  
Department of Education

### Communications Director

Kim Knight, CPA  
kimberly.knight@iowa.gov  
Department of Administrative Services

### Community Services Director

Daniel Durbin, CPA  
daniel.durbin@auditor.state.ia.us  
Auditor of State

### Early Careers Director

Valerie Wedgeworth  
valerie.wedgeworth@iowa.gov  
Iowa Vocational Rehabilitation

### Membership Director & Recognition Chair

Jenny Wall, CPA  
jenny.wall@auditor.state.ia.us  
Auditor of State

### Professional Certification Director

Denise Ragias, CGFM  
denise.ragias@iowa.gov  
Department of Education

### Program & Technical Meeting Director

VACANT

### Website Chair

Patricia Townsend, CPA  
patricia.townsend@iowa.gov  
Iowa Communications Network

## CEC Meeting Minutes | Thursday, August 11, 2011

President Natalie Storm opened the August 11, 2011 meeting of the Chapter Executive Committee (CEC). Other members in attendance were Patricia Townsend, Kim Knight, Denise Ragias, Janice Evans, Khristan Kaufman, and via telephone: Jenny Wall, Janice Jensen, Val Wedgeworth, and Deb Schroeder.

**Chapter President:** President, Natalie Storm, went over the meeting schedule for the program year (see website or newsletter for dates and topics). Natalie requested any suggestions for speakers be given to her as we don't currently have anyone on the CEC to fill the position for Programs.

**PDC Report:** Natalie reported that the conference was really good. While at the conference, she found out that quite a few chapters pay part, or all, of the membership fee for CEC members as an incentive. Natalie asked to put a small committee together to put together some ground rules proposing how the Des Moines Chapter could implement a similar program. Janice Evans recommended having some people that are not on the CEC involved in the committee. Val, Deb, Kim, Patricia, and Natalie are the current volunteers for the committee.

**President Elect:** Deb Schroeder asked CEC members to let her know when reports are submitted to National, or other communications are made with National, so the Chapter can get points. Deb is also working on getting the SLM hosted in Des Moines next year or the year following.

**Treasurer:** Natalie Storm reported on the Chapter's current fund balance. We currently have approximately \$700 in the checking account, \$5 petty cash, \$3,900 in savings and \$4,038 in cd's. Natalie presented the budget and it was approved by vote.

**Membership:** Jenny Wall reported that we have 3 new members, bringing total membership to approximately 77 members. Jenny will e-mail new members to Kim so they can be included in the newsletter.

**Newsletter:** Kim has seen other chapters preparing quarterly newsletters rather than monthly. Due to the large amount of time it takes to prepare the newsletter and the amount of information that is repeated month-to-month, Patricia moved that the Des Moines Chapter prepare quarterly newsletters and a monthly mini-letter to keep Chapter members informed of upcoming events. Kim seconded the motion and it was carried. *Newsletter articles are due to Kim by August 26<sup>th</sup>.*

**Programs:** Natalie is looking for speaker ideas. If anyone has an idea, please do not schedule anything yourself so as to avoid double scheduling, rather let her know the name and contact information.

**Vendor -vs- Sub recipient Audio** – The Chapter purchased the audio cd "Vendor -vs- Sub recipient. A discussion was held as to when we should hold the training to view the cd. Janice Jensen suggested adding the training to the Sept. 28<sup>th</sup> lunch-n-learn and making the day a "mini-seminar." There was also a suggestion to offer the audio once in the fall then again in the spring. It was decided the audio would be added onto the Oct. 5<sup>th</sup> audio conference in the morning (10:30 -12:30) with lunch from 12:30 – 1:00 then the afternoon audio conference from 1:00 – 3:00. Lunch could be offered for those who are interested.

**NASACT Conferences** – NASACT Conference opportunities will be e-mailed to the CEC for voting as they arise.



Article continued on page 3.

## CEC Meeting Minutes (Continued from pg 2.)

**May Seminar** – Overall we had good reviews from the past seminar; however, there were many comments that the audio portion did not go well. Natalie recommended we try not combining the seminar with an audio conference this year. A pre-purchased audio conference may work if someone has previewed it beforehand to make sure it's good.

There was a discussion as to whether one or two seminars this year. As they can be difficult to plan, Kim thought one would be enough. At this time, we will continue with a planning committee for the Spring 2012 seminar and revisit the idea of a second in the Fall 2012. The volunteers for the planning committee were Natalie, Denise, Kim, Jenny and maybe Deb.

**Community Services:** Charities this quarter are Meals from the Heartland and Susan G. Komen Walk for the Cure. Natalie will establish the "AGA Racers" team and e-mail the details to members in October. Kim moved and Denise seconded that the chapter approve a contribution of \$100 for each charity (6 total) with a fundraiser this year. The motion was carried.

**Chapter Meetings:** There was a discussion on who would be available to run the power point for the upcoming audio conferences. Natalie will take care of August, Val will do September, and Natalie or Val will do October. It has been mentioned by various people that the person running the power point isn't able to get the full benefit of the training; therefore, Janice moved that this person receive free registration. Denise seconded the motion – all approved.

**Name Drawing:** The past practice of drawing a name at each chapter meeting was discussed. The reason for doing this was to attract people to attend our events and hopefully increase chapter membership. Deb moved that each person whose name is drawn will receive a reasonably priced\* meal (compliments of the Chapter) at the YE evening meeting. The prize will be non-transferrable and will serve as an incentive for people to attend the year-end event. Janice seconded the motion. Motion was carried. \* *Definition of "reasonably priced" will be determined once a location for the event has been set.*

**Research/Historian:** Committees should begin meeting in September at the regularly scheduled time for the CEC meeting (2<sup>nd</sup> Thursday of each month from 11:30 – 12:30). This includes the committee for the By-laws & Procedures updates.

**Early Careers:** Val suggested visiting a school (possibly DMACC) to get the word out about AGA. Patricia offered to go with her. The procedures for the scholarship application process need to be updated and brought to the CEC for approval.

**Webmaster:** New schedule is on the web. If there is anything else for the web, e-mail to Patricia.

**Accountability:** Centric reports are wanted for chapters.

**Next Meeting:** CEC meetings will be held quarterly. The next CEC meeting will be scheduled for November 10<sup>th</sup>.

## Interested in becoming a Certified Government Financial Manager (CGFM)?

The Des Moines AGA Chapter is here to help. General information about the CGFM program and exam is available on our website at <http://www.agadsm.org/epc.asp> or the national website at <http://www.agacgfm.org/cgfm/cgfmdefault.aspx>.

To aid in your studies, the Des Moines AGA Chapter has two study guides for the newly revamped CGFM exam. The study guides are available to check out to anyone interested.

Scholarships are also available to Chapter members, in good standing, who successfully complete the CGFM exam (Scholarship information is available at the above referenced website).

If you have any questions about the program, please contact Denise Ragias: 281-4741

[Denise.Ragias@iowa.gov](mailto:Denise.Ragias@iowa.gov)



## Welcome to Our New Members!!

1. Deborah Krueger (Iowa College Student Aid Commission)
2. Claudia Siegel (USDA)
3. Jenny Wall (Auditor of State)



Congratulations to Kent Farver, Department of Education, for passing the 3rd and final part of the CGFM!!



## Community Service Corner

September's community service focus is on **Susan G. Komen Race for the Cure**. The **Susan G. Komen Race for the Cure's** focus is on raising money and awareness to help researchers find a cure for breast cancer. Donations may be made at the September and October meetings. You can also participate in the annual Susan G. Komen Race for the Cure. An email was sent to members on 9/12/2011 with participation details. Contact Natalie @ [nstorm@dhs.state.ia.us](mailto:nstorm@dhs.state.ia.us) if you need more information about the race.

In June-August we collected \$66 for Kids Against Hunger. \$100 was matched by the Des Moines Chapter and a request for a \$166 match has been made to the National Chapter. Thank you to the contributors!



### **AGA Members can Earn Points as follows:**

#### **ATTENDANCE:**

- Regular chapter meeting (20 points)
- Bonus for attending more than 4 meetings (15 points)
- Bonus meeting (30 points)
- For each guest attending the meeting (10 points with a maximum of 20 points per guest per member)

#### **MEMBERSHIP:**

- Each new member sponsored and accepted (35 points)

#### **CHAPTER PROGRAMS:**

- Member who is a speaker or panel participant at regular meeting (50 points)

#### **EDUCATIONAL:**

- Each chapter sponsored presentation at high schools or colleges (50 points)
- Conducting chapter workshop or financial management in addition to regular meeting (50 points)
- Attending an AGA-sponsored seminar or training session (35 points)

#### **PUBLICATIONS:**

- Manuscript of research project accepted by National Research Committee (100 points)
- A financial management article at least 300 words published in newsletter or other AGA publication (50 points)
- Article on any topic of general interest of at least 200 words published in chapter newsletter (30 points)

#### **SERVICE:**

- Participating in an AGA sponsored community service project (15 points)
- Participating in a Non-AGA sponsored community service project (5 points with a maximum of 25 points)
- Service on any board, committee, or other chapter position other than an office (40 points)

To check your total points or to report activities or events you have participated in, please contact Jenny Wall at:

[Jenny.Wall@auditor.state.ia.us](mailto:Jenny.Wall@auditor.state.ia.us)

The membership recognition director must be notified if you attend an AGA sponsored seminar or training session with a chapter other than the Des Moines chapter, or if you participate in a Non-AGA sponsored community service project to properly award the membership recognition points.



## AGA - Des Moines Chapter

### Operating Statement for the Period Ended August 31, 2011

### For the Year Ending April 30, 2012

	Budget	% of Budget	1st Qtr <u>2011</u>	August <u>2011</u>	2nd Qtr <u>2011</u>	Year to <u>Date</u>
<b><u>Revenues/Receipts</u></b>						
Interest	30.00	43%	12.94		-	12.94
Membership Fees	400.00	61%	244.20		-	244.20
Conference Revenues	21,000.00	27%	5,479.26	222.74	222.74	5,702.00
National Recruitment Scholar.	150.00	0%	-		-	-
Donations	350.00	22%	76.00		-	76.00
Member Meals	800.00	0%	-		-	-
<b>Total Revenues</b>	<b>22,730.00</b>		<b>5,812.40</b>	<b>222.74</b>	<b>222.74</b>	<b>6,035.14</b>
<b><u>Expenses</u></b>						
Conference Expenses	16,440.02	45%	7,272.05	50.85	50.85	7,322.90
Postage & Supplies	100.00	4%	3.84		-	3.84
Website Expense	0.01	0%	-		-	-
National PDC	1,475.00	9%	127.47	-	-	127.47
Scholarship	2,185.00	0%	-	-	-	-
CGFM Study Guides	0.01	0%	-		-	-
Gifts	265.00	14%	37.80	-	-	37.80
Meals	800.01	0%	-	-	-	-
Donations	950.00	19%	176.00	-	-	176.00
Miscellaneous	60.00	117%	70.38		-	70.38
<b>Total Expenses</b>	<b>22,275.05</b>		<b>7,687.54</b>	<b>50.85</b>	<b>50.85</b>	<b>7,738.39</b>
<b>Revenues o/(u) Expenses</b>	<b>454.95</b>		<b>(1,875.14)</b>	<b>171.89</b>	<b>171.89</b>	<b>(1,703.25)</b>
<b>Beginning Balance 5/01/11</b>	<b>10,549.93</b>					<b>10,549.93</b>
<b>Ending Balance 4/31/2011</b>	<b>11,004.88</b>					<b>8,846.68</b>



### AGA-Des Moines Chapter

### Balance Sheet

### As of August 31, 2011

<b>Assets</b>		
Checking	820.01	
Petty Cash	5.00	
Savings	3,983.49	
Certificate of Deposit	4,038.18	
<b>Total Assets</b>		<b>8,846.68</b>
<b>Liabilities &amp; Equity</b>		
Equity-Unreserved	8,846.68	
<b>Total Liabilities &amp; Equity</b>		<b>8,846.68</b>

## MARK YOUR CALENDAR FOR THE FOLLOWING AGA EVENTS!!!!

### Starting and Ending Times are usually:

**Lunch n' Learn (1 CPE) - 11:30 a.m. - 1:00 p.m.**

**Audio Conferences (2 CPE) - 1:00 p.m. - 3:00 p.m.**

**NASACT Webinars (2 CPE) - 1:00 p.m. - 3:00 p.m.**

9/28/2011	<b>Lunch 'n Learn:</b> Jean Slaybaugh, DHS, "Impact of Budget Reductions on DHS & the Resulting Redesign"
	<b>Audio:</b> Continuous Monitoring - Management's Window to Preventing Fraud, Waste & Abuse
10/5/2011	<b>Video:</b> 10:30-12:30 "Subrecipient or Vendor? - Sorting Out the Subaward of Federal Grant Funds Now"
	<b>Audio:</b> SSAE 16 Reporting on Controls - Revised SAS 70 Report & Service Organization Control Reports
10/19/2011	<b>Lunch 'n Learn:</b> TBA
	<b>Audio:</b> Performance Management
11/2/2011	<b>Lunch 'n Learn:</b> David Vaudt, State Auditor, "Status of the State Budget"
	<b>Audio:</b> Major Challenges to the Public Sector Auditing Profession
11/16/2011	<b>Audio:</b> Using XBRL to Improve Accountability, Transparency & Efficiency in Government
12/14/2011	<b>Lunch 'n Learn:</b> TBA
	<b>Audio:</b> Fraud
1/11/2012	<b>Lunch 'n Learn:</b> TBA
	<b>Audio:</b> Getting a Handle on Internal Controls
2/8/2012	<b>Lunch 'n Learn:</b> Kristi Maitre, IRS, "IRS Update"
	<b>Audio:</b> Financial Management
3/7/2012	<b>Lunch 'n Learn:</b> Margaret Van Ginkel, Iowa State University, "Budgeting 101"
	<b>Audio:</b> Data Mining
4/18/2012	<b>Lunch 'n Learn:</b> TBA
	<b>Audio:</b> Finding Strength in Numbers: Sampling Techniques to Improve Financial Audit, Control & Program Performance
5/9/2012	<b>Audio:</b> Fraud
	<b>Evening Meeting:</b> TBA
5/23/2012	<b>Spring Ethics Conference</b>

## Regional Training Opportunities

### Lincoln Chapter:

- ⇒ September 21, 2011; Fall Professional Development Conference
- ⇒ See [www.lincolneaga.org/index.php](http://www.lincolneaga.org/index.php) for details.



### The AGA LEDGER

Des Moines Chapter AGA  
PO Box 1351  
Des Moines, IA 50305-1351



## COMMUNITY SERVICE NEWS:

- **Saturday, October 22, 2011 is the Susan G Komen Race for the Cure.**
- **Donations for the Susan G Komen Foundation will be collected at the October training events.**



## TRAINING EVENTS :

**Oct 5 - Audio  
Conference**

**Oct 12 - CD  
Conference**

**Oct 19 - Lunch n'  
Learn & Audio  
Conference**

**Nov 2 - Lunch n'  
Learn & Audio  
Conference**

**See page 2 for  
training details.**

# The AGA Mini-Ledger

VOLUME 1, ISSUE 1

OCTOBER 2011

## From the President

Welcome to our first mini-letter! Many of you are probably wondering what this whole mini-letter concept is all about. Well, as a CEC, we have decided that our quarterly newsletters can get a little long. And while we feel it is important for you to know things like for the September/October charity of the month, we have collected an impressive \$376 for the Susan G Komen Foundation, we also understand you are all hard at work and may not have time to read through 10 pages to get to that detail. So, we have created a monthly mini-letter which will highlight just those things we feel are important to you. For those of you who like the 10 pages, don't fret, we will still publish a quarterly newsletter with all the information you could ever want (and all the information required by National).

With that little explanation, let's get on to the important stuff! As I stated, we have collected an impressive \$376 for the Susan G Komen Foundation so far. We still have a little ways to go to meet our goal of \$500 so if you haven't donated yet, please go out to the website [www.komeniowa.org](http://www.komeniowa.org) and search for the AGA Racers. Keep in mind, all donations made are matched by National! While you're there, if you haven't signed up to participate in the race and still want to, the password to join is AGADSM. This year they even have the option of "sleeping in for the cure" for those of you who would rather dream about racing than getting up early in the morning to come down to the capitol and walk.

In September, we had Jean Slaybaugh and Lori Lipscomb speak to us about the impact the budget cuts have had on the Department of Human Services and the services provided. Following their presentation, we held the audio conference "Continuous Monitoring-Management's Window to Preventing Fraud, Waste, and Abuse". On October 5<sup>th</sup>, we gathered again for the audio conference "SSAE 16 Reporting on Controls – Revised SAS 70 Report and Service Organization Control Reports." Due to a mishap with the CD, the morning session "Vendor vs. Subrecipient" was rescheduled for October 12<sup>th</sup>. If you did not sign up for this session, but would like to join us, please contact me at [nstorm@dhs.state.ia.us](mailto:nstorm@dhs.state.ia.us) or 515-281-8047. We still have room. We will also be renting the CD out so if many people in your office would like to listen to this conference, contact me for group rates.



We have a few more scheduling updates to pass along. So far this year, we've been lucky and no dates have been changed (I'm keeping my fingers crossed), but we have filled in some of the gaps for speakers. So please check out page 2 of the mini-letter for the updated schedule.

This wraps up the first mini-letter of the season. If there is something you would like to see each month, please let me know.

Natalie Storm, Des Moines Chapter President

# Training Calendar

## AGA - Des Moines Chapter Training Calendar

Starting and Ending Times are Usually:

Lunch n' Learn (1 CPE) - 11:30 am - 1:00 pm

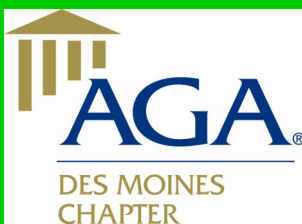
Audio Conferences (2 CPE) - 1:00 pm - 3:00 pm

NASACT Webinars (2 CPE) - 1:00 pm - 3:00 pm

- 9/28/2011 **Lunch 'n Learn:** Jean Slaybaugh, DHS, "Impact of Budget Reductions on DHS & the Resulting Redesign"  
**Audio:** Continuous Monitoring - Management's Window to Preventing Fraud, Waste & Abuse
- 10/5/2011 **Audio:** SSAE 16 Reporting on Controls - Revised SAS 70 Report & Service Organization Control Reports
- 10/12/2011 **Video:** 10:30-12:30 "Subrecipient or Vendor? - Sorting Out the Subaward of Federal Grant Funds Now"
- 10/19/2011 **Lunch 'n Learn:** Natalie Storm & Patricia Townsend, "Citizen Centric Reporting" including completed reports for the Des Moines Chapter AGA and ICN  
**Audio:** Performance Management
- 11/2/2011 **Lunch 'n Learn:** David Vaudt, State Auditor, "Status of the State Budget"  
**Audio:** Major Challenges to the Public Sector Auditing Profession
- 11/16/2011 **Audio:** Using XBRL to Improve Accountability, Transparency & Efficiency in Government
- 12/14/2011 **Lunch 'n Learn:** TBA  
**Audio:** Fraud
- 1/11/2012 **Lunch 'n Learn:** TBA  
**Audio:** Getting a Handle on Internal Controls
- 2/8/2012 **Lunch 'n Learn:** Kristi Maitre, IRS, "IRS Update"  
**Audio:** Financial Management
- 3/7/2012 **Lunch 'n Learn:** Margaret Van Ginkel, Iowa State University, "Budgeting 101"  
**Audio:** Data Mining
- 4/18/2012 **Lunch 'n Learn:** TBA  
**Audio:** Finding Strength in Numbers: Sampling Techniques to Improve Financial Audit, Control & Program Performance
- 5/9/2012 **Audio:** Fraud  
**Evening Meeting:** TBA
- 5/23/2012 **Spring Ethics Conference**







# The AGA Mini-Ledger

VOLUME 1, ISSUE 2

NOVEMBER 2011

## COMMUNITY SERVICE NEWS:

- On Sunday, December 18, 2011, help hand out 3D glasses and admit cars into Jolly Holiday Lights (Make a Wish Foundation). Contact Natalie Storm to volunteer (281-8047)
- Donations for Shoes That Fit will be collected at the November and December training events.



## TRAINING EVENTS :

Dec 14 - Lunch n'  
Learn & Audio  
Conference

Jan 11 - Lunch n'  
Learn & Audio  
Conference

Feb 8 - Lunch n'  
Learn & Audio  
Conference

See page 2 for  
training details.

## From the President

HAPPY THANKSGIVING! Our program year is now in full swing and I'm happy to announce that we have speakers arranged for the remaining lunch-n-learn sessions. Thanks to everyone who provided me with ideas for this year. I even have a few names left over to get next year's sessions off to a good start.

For our November meeting, we welcomed David Vaudt (State Auditor) as he discussed the status of the State's budget and what we may see in the future legislative session. This was followed by an audio conference "Major Challenges to the Public Sector Auditing Profession." Our next meeting will be on December 14th with Kathy Mabie from the Department of Management. She will be talking about the Iowa grant reporting requirement and steps the Department of Management is taking to help agencies ensure compliance. Please make sure you check the updated schedule on page 2 of the Mini-Ledger for the complete schedule.

Moving on to Community Service, in last month's newsletter I reported we had collected \$376 for the Susan G Komen Foundation. With October's collections added in, we collected a total of \$568 to cure breast cancer—passing our goal of \$500. The Des Moines Chapter has added \$100 to our collections and have asked National to match the entire \$668. In addition to our collections, we had 18 individuals participate in the race—some walking the entire 5K, some walking 1 mile, and others walking some unknown amount in between. Thank you to all who contributed and participated in this cause.

We have two community service events coming up this month. Our first is taking collections for Shoes That Fit. Information about this charity can be found at [www.shoesthatfit.org](http://www.shoesthatfit.org). Collections will be taken at the November and December meetings and given to the organization to provide shoes (and other clothing items) to needy children in the area. Our second opportunity is a donation of time at Jolly Holiday Lights (Make A Wish Foundation). The Des Moines Chapter will be at the admission gate handing out 3D glasses and admitting cars into Jolly Holiday Lights. Please let me know if you are willing to donate your time for this cause. We are volunteering Sunday December 18th starting at 7:30. If interested, please contact me at [nstorm@dhs.state.ia.us](mailto:nstorm@dhs.state.ia.us)



And finally, we are now starting our search for next year's Chapter Executive Council (CEC). We have 8 or 9 positions that need filled. The CEC meets once a quarter to discuss chapter business. As an incentive, a couple of these positions come with a trip to Las Vegas for the Regional Leadership Conference in May. If you have any interest in serving on the Council, please let me know.

Natalie Storm, Des Moines Chapter President

# Training Calendar

## AGA - Des Moines Chapter Training Calendar

**Starting and Ending Times are Usually:**

**Lunch n' Learn (1 CPE) - 11:30 am - 1:00 pm**

**Audio Conferences (2 CPE) - 1:00 pm - 3:00 pm**

**NASACT Webinars (2 CPE) - 1:00 pm - 3:00 pm**

- 10/19/2011 Lunch 'n Learn:** Natalie Storm & Patricia Townsend, "Citizen Centric Reporting" including completed reports for the Des Moines Chapter AGA and ICN  
**Audio:** Performance Management
- 11/2/2011 Lunch 'n Learn:** David Vaudt, State Auditor, "Status of the State Budget"  
**Audio:** Major Challenges to the Public Sector Auditing Profession
- 11/16/2011 Audio:** Using XBRL to Improve Accountability, Transparency & Efficiency in Government
- 12/14/2011 Lunch 'n Learn:** Kathy Mabie (DOM) and Tena Malone (Dulles Tech) – Grant Reporting Requirements and the Iowa Grants.gov system  
**Audio:** Boost Efficiency, Accuracy, Transparency, Fraud Detection and Cost Savings by Preventing Inappropriate Payments
- 1/11/2012 Lunch 'n Learn:** Karen Keninger - Director of the Iowa Department for the Blind – Department for the Blind's Resources and Services.  
**Audio:** Getting a Handle on Internal Controls
- 2/8/2012 Lunch 'n Learn:** Kristi Maitre – "IRS update"  
**Audio:** The New Stewardship Imperative – Federal Financial Management at the Crossroads
- 3/7/2012 Lunch 'n Learn:** Margaret Van Ginkel – Iowa State University, "Budgeting 101"  
**Audio:** Data Mining
- 4/18/2012 Lunch 'n Learn:** Kent Stock – Community Savings Bank – "Leadership"  
**Audio:** Find Strength in Numbers: Sampling Techniques to Improve Financial Audit, Control and Program Performance
- 4/25/2012 Evening Meeting:** John Seefeld, Jester Insurance – "Effects of Fraud in the Insurance Division"  
Place to be announced
- 5/9/2012 Audio:** Fraud
- 5/23/2012 Ethics Conference** – to be announced





## President's Message

HAPPY NEW YEAR!!! The Des Moines Chapter took a brief hiatus over the break so I want to welcome everyone to the New Year. And with the new year, came the realization that it really is winter, and that we have to make it to May before we get another holiday... But the Des Moines Chapter is starting the New Year off with a full line-up to hopefully help ease you all through it.



On January 11<sup>th</sup>, we welcomed Karen Keninger, the Director of the Department for the Blind, to our meeting. Karen discussed where the Department gets its funding and what programs it offers. Following Karen's presentation, we held our first audio conference of the year "Getting a Handle on Internal Controls."

Next month, we welcome back our favorite IRS worker, Kristy Maitre, who will talk about the tax updates for the 2011 year. Following her presentation, we will hear the audio conference "The New Stewardship Imperative – Federal Financial Management at the Crossroads."

On March 27<sup>th</sup> and March 28<sup>th</sup>, we will be hosting the 3<sup>rd</sup> CGFM review course. Whether you are sitting for the CGFM exams or not, this 16 credit course will help you understand internal controls, the management environment and just what it is those auditors are looking for when they pick up your financials. Registrations are now being taken on [www.eventbrite.com](http://www.eventbrite.com). You are not officially registered until payment has been received.

One more program note, we have secured a speaker for our annual ethics conference. We are tentatively looking at Thursday (that's right – Thursday), May 24<sup>th</sup>. The conference is planned for 7 hours of CPE and for the first time, does not include an audio conference. We are branching out! Be on the lookout for registrations which should be coming out soon.

That's all for program notes, so let's move on to some other business, community service. Since our last newsletter, we had a night out at the Jolly Holiday Lights – letting cars through the gates. For those of us that participated, we were extremely thankful for the warmer than normal December. I got home and thankfully could still feel my fingers. We also finished our collections for the local charity "Shoes That Fit." For the months of January and February, we will be collecting donations for the National Federation for the Blind.

Our final order of business is gathering volunteers for next year's CEC. We have a lot of positions and not many volunteers. I will be announcing open positions at the meetings until we get enough people to be able to continue AGA next year. If you have any interest in a position (or are even interested in sharing a position), please contact me at [nstorm@dhs.state.ia.us](mailto:nstorm@dhs.state.ia.us) or 515-281-8047. Volunteering does not take much time but is vital to the survival of the Des Moines Chapter.

Until next time, Natalie Storm, Des Moines Chapter President

## Upcoming Events!!

**Jessie Parker Bldg.  
Knudsen Room  
Des Moines, IA**

**Wed., Feb. 8, 2012**

### Lunch 'n Learn

**11:30 - 1:00**

"IRS Update"

Recommended CPE: 1 Hr.

### Audio Conference

**1:00 - 3:00**

"The New Stewardship Imperative –  
Federal Financial Management  
at the Crossroads"

Recommended CPE: 2 Hrs.

## Inside this Issue:

Chapter Executive Committee...	2
CEC Meeting Minutes.....	2
CGFM Study Guides.....	3
Chapter Meeting Minutes.....	3
Member Recognition.....	3
Community Service.....	5
Chapter Financials.....	6
Training Calendar.....	7
National News.....	7



**Chapter Executive Committee****Chapter President**

Natalie Storm, CPA  
 nstorm@dhs.state.ia.us  
 Department of Human Services

**President-Elect & Chapter Recognition Chair**

Deb Schroeder  
 schroeder@northpolk.org  
 North Polk Community School District

**Immediate Past President**

Patricia Townsend, CPA  
 patricia.townsend@iowa.gov  
 Iowa Communications Network

**Secretary**

Khristan Kaufman, CPA, CFE  
 khristan.kaufman@ia.usda.gov  
 USDA, GIPSA, & P&SP

**Treasurer**

Natalie Storm, CPA  
 nstorm@dhs.state.ia.us  
 Department of Human Services

**Accountability Outreach Chair**

Janice Jensen, CPA, CGFM  
 janice.jensen@iowa.gov  
 Iowa Vocational Rehabilitation

**By-Laws & Procedures Director & Historian**

Janice Evans, CPA, CGFM  
 janice.evans@iowa.gov  
 Department of Education

**Communications Director**

Kim Knight, CPA  
 kimberly.knight@iowa.gov  
 Department of Administrative Services

**Community Services Director**

Daniel Durbin, CPA  
 daniel.durbin@auditor.state.ia.us  
 Auditor of State

**Early Careers Director**

Valerie Wedgeworth  
 valerie.wedgeworth@iowa.gov  
 Iowa Vocational Rehabilitation

**Membership Director & Recognition Chair**

Jenny Wall, CPA  
 jenny.wall@auditor.state.ia.us  
 Auditor of State

**Professional Certification Director**

Denise Ragias, CGFM  
 denise.ragias@iowa.gov  
 Department of Education

**Program & Technical Meeting Director**

VACANT

**Website Chair**

Patricia Townsend, CPA  
 patricia.townsend@iowa.gov  
 Iowa Communications Network

**CEC Meeting Minutes | Thursday, November 10, 2011****Chapter President –**

Meeting schedule – next CEC meeting February 9th

2012 -2013 CEC – vacated positions

PDC information

Membership retention or additions – scholarship money use.  
 We have \$159.

Incentive for CEC members

Positive feedback on the Citizen Centric Report – whose responsibility going forward?

**President Elect**

Points for CRP – please remember to share with Deb when you submit reports to National or communicate with National so we can get points.

**Treasurer**

\$1,195 in the checking account; \$3,984 in the savings account; \$4,038.18 in CD's.

Budget Amendments

Payment for passing CGFM exams

**Membership Chair****Newsletter Editor**

News articles due by the November 28<sup>th</sup> for the quarterly newsletter.

Quarterly newsletter & monthly mini-letter  
 August, November, February, May

**Program**

December 14<sup>th</sup> lunch-n-learn speaker is Kathy Mabie (DOM); speaking on grant reporting requirements and the Iowa Grants.gov system.

Audio CD purchased – positive feedback.

**NASACT conferences**

January 18<sup>th</sup> – Workplace Ethics: Understanding Your Responsibilities. Discussed potentially purchasing the CD to offer at a later date.

Final meeting – have a speaker, need a date. April or May??

Final meeting will be the last Wednesday in April.

**May seminar**

Planning committee met – looking at a full day conference – 2 possible speakers.

Budget will be presented at a special meeting as we get further along.



(continued on page 8.)



## Chapter Meeting Minutes - Oct. 19, 2011

The Des Moines Chapter AGA met at the Jessie Parker Building in the Knudsen Room on October 19, 2011 for a combined "Lunch 'n Learn" and Audio Conference. President Natalie Storm opened the meeting.

### Announcements:

**Fundraisers & Community Service:** Community service focus for the month of October is Susan G. Komen Race for the Cure. AGA has a team, "Support AGA Racers!" participating in the Race for the Cure on October 22, 2011. Walkers will meet at 7:45am outside of the Hoover building for pictures. Anyone who has not joined the team but would like to contribute their support can make contributions online through October 21, 2011. An envelope was passed to collect donations for the Susan G. Komen Race for the Cure.

**Future Meetings:** Natalie reminded everyone that the next meeting scheduled is scheduled for November 2<sup>nd</sup> in the same location. David Vaudt, State Auditor will be presenting on the "Status of the State Budget." There will be an audio conference following titled "Major Challenges to the Public Sector Auditing Profession." Check the Newsletter for additional dates for future events.

Natalie requested anyone with speaker ideas or topics please let her know as there are still a few dates left open.

**Guest Speaker:** Natalie Storm and Patricia Townsend delivered a presentation on Citizen Centric Reporting. The Audio Conference that followed was entitled "Performance Management."

There were 14 members (including 2 speakers) & 3 guests present. The name drawn for a free meal at the year-end evening meeting was Khristan Kaufman.

## Chapter Meeting Minutes - Nov. 2, 2011

The Des Moines Chapter AGA met at the Jessie Parker Building in the Knudsen Room on November 2, 2011 for a combined "Lunch 'n Learn" and Audio Conference. President Natalie Storm opened the meeting.

### Announcements:

**Fundraisers & Community Service:** Community service focus for the month of November is Shoes that Fit. Contributions will be accepted at the November and December meetings. An envelope was passed to collect donations for Shoes that Fit.

The chapter is volunteering at Jolly Holiday Lights again this year on December 18th. Please let Natalie know if you are willing to volunteer. You're welcome to volunteer family members to help as well.

**Guest Speaker:** Natalie introduced our guest speaker, State Auditor David Vaudt. David Vaudt spoke on the "Status of the State Budget." The audio conference that followed was entitled "Major Challenges to the Public Sector Auditing Profession."

There were 30 members (including speaker) & 6 guests present. The name drawn for a free meal at the year-end evening meeting was Lori Smith.

## Interested in becoming a Certified Government Financial Manager (CGFM)?

The Des Moines AGA Chapter is here to help. General information about the CGFM program and exam is available on our website at <http://www.agadsm.org/> or the national website at <http://www.agacgfm.org/cgfm/cgfmdefault.aspx>.

To aid in your studies, the Des Moines AGA Chapter has two study guides for the newly revamped CGFM exam. The study guides are available to check out to anyone interested.

Scholarships are also available to Chapter members, in good standing, who successfully complete the CGFM exam (Scholarship information is available at the above referenced website).

If you have any questions about the program, please contact Denise Ragias: 281-4741

[Denise.Ragias@iowa.gov](mailto:Denise.Ragias@iowa.gov)



## Member Recognition

The top 3 members and their points, as of January 2012 are:

1. Cheryl Mather - 440 points
2. Cindy Weber - 430 points
3. Michelle Wendel - 425 points



**Congratulations to Richa Goel & Natalie Storm on passing the CGFM!!**



## Welcome to Our New Members!!

1. Gordon Thompson (Linn County Auditor)
2. Suzanne Kieffer (Veterans Affairs Medical Center, West Branch)



## Chapter Meeting Minutes - Dec. 14, 2011

The Des Moines Chapter AGA met at the Jessie Parker Building in the Knudsen Room on December 14, 2011 for a combined "Lunch 'n Learn" and Audio Conference. President Natalie Storm opened the meeting.

### Announcements:

**Fundraisers & Community Service:** Community service focus for the months of November and December is the Shoes That Fit. Contributions will be accepted at the meetings. An envelope was passed to collect donations for the Shoes That Fit.

**CEC Volunteers:** The chapter is again looking for volunteers to serve on the CEC. A sign-up sheet was passed around at the meeting. Members were asked to contact Natalie with any questions.

**Upcoming Events:** The next Lunch-n-Learn is scheduled for January 11, 2012. The Director of the Iowa Department for the Blind will speak about the programs offered through the Department and the funding sources for the department.

**Guest Speaker:** Natalie introduced our guest speaker, Kathy Mabie of the Iowa Department of Management. Kathy gave a very interesting talk on the grants reporting requirements and the IowaGrants.gov system. The audio conference that followed was entitled "Boost Efficiency, Accuracy, Transparency, Fraud Detection and Cost Savings by Preventing Inappropriate Payments."

There were 17 members, 3 guests, and 1 speaker present. The name drawn for a free meal at the year-end evening meeting was Lori McClannahan.

## Chapter Meeting Minutes - Jan. 11, 2012

The Des Moines Chapter AGA met at the Jessie Parker Building in the Knudsen Room on January 11, 2012 for a combined "Lunch 'n Learn" and Audio Conference. President Natalie Storm opened the meeting.

### Announcements:

**Fundraisers & Community Service:** Community service focus for the months of January and February is the National Federation of the Blind. Contributions will be accepted at the meetings. An envelope was passed to collect donations for National Federation of the Blind.

**Section Three GCFM Review:** Review course is being offered March 27<sup>th</sup> and March 28<sup>th</sup>. Registration can be completed online for anyone interested in attending to become a CGFM or just to learn more about auditing (obtain some CPE's).

**CEC Volunteers:** The chapter is again looking for volunteers to serve on the CEC. A sign-up sheet was passed around at the meeting. There are still many positions available. If you have any interest PLEASE sign up! Members were asked to contact Natalie with any questions.

**Upcoming Events:** The next Lunch-n-Learn is scheduled for February 8<sup>th</sup>. This meeting will be our annual IRS update from Kristi Maitre.

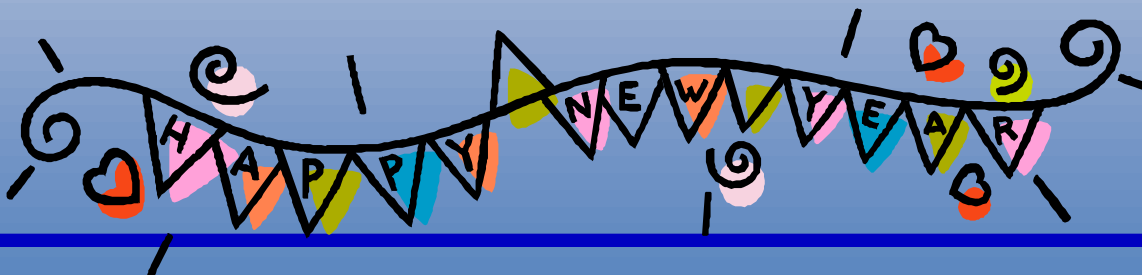
**Guest Speaker:** Natalie introduced our guest speaker, Karen Keninger. Karen Keninger is the Director for the Iowa Department for the Blind. Ms. Keninger gave a compelling speech on what her Department is all about. The audio conference that followed was entitled "Getting a Handle on Internal Controls."

There were 25 members, 3 guests, and 2 speakers present. The name drawn for a free meal at the year-end evening meeting was Deb Schroeder.



**2011 Race for the Cure  
Des Moines, Iowa**

Pictured: (L to R) Kim Knight, Denise Ragias, Natalie Storm, Deb Schroeder, Rosemary Johnson, Patricia Townsend, Janice Evans



## Community Service Corner



October's community service focus was the Susan G. Komen Race for the Cure. \$568 was collected from members, another \$100 was given by the Chapter, and \$668 was matched by National. In addition to the donations, more than a dozen people joined the AGA team to walk for the cure. (See page 4 for photo!)

In November and December, we collected donations for Shoes That Fit, a local organization that provides much-needed new shoes and clothing items to children. A total of \$139 was collected from members, along with a \$100 Chapter contribution. Also in December, a small group of volunteers helped admit cars into Jolly Holiday Lights with proceeds going to the Make-A-Wish Foundations.

Our next charity is the National Federation for the Blind. Donations will be accepted at the January and February meetings.

Thank you to all supporters!!!



### **AGA Members can Earn Points as follows:**

#### **ATTENDANCE:**

- Regular chapter meeting (20 points)
- Bonus for attending more than 4 meetings (15 points)
- Bonus meeting (30 points)
- For each guest attending the meeting (10 points with a maximum of 20 points per guest per member)

#### **MEMBERSHIP:**

- Each new member sponsored and accepted (35 points)

#### **CHAPTER PROGRAMS:**

- Member who is a speaker or panel participant at regular meeting (50 points)

#### **EDUCATIONAL:**

- Each chapter sponsored presentation at high schools or colleges (50 points)
- Conducting chapter workshop or financial management in addition to regular meeting (50 points)
- Attending an AGA-sponsored seminar or training session (35 points)

#### **PUBLICATIONS:**

- Manuscript of research project accepted by National Research Committee (100 points)
- A financial management article at least 300 words published in newsletter or other AGA publication (50 points)
- Article on any topic of general interest of at least 200 words published in chapter newsletter (30 points)

#### **SERVICE:**

- Participating in an AGA sponsored community service project (15 points)
- Participating in a Non-AGA sponsored community service project (5 points with a maximum of 25 points)
- Service on any board, committee, or other chapter position other than an office (40 points)

The membership recognition director must be notified if you attend an AGA sponsored seminar or training session with a chapter other than the Des Moines chapter, or if you participate in a Non-AGA sponsored community service project to properly award the membership recognition points.

To check your total points or to report activities or events you have participated in, please contact Jenny Wall at:

Jenny.Wall@auditor.state.ia.us

**AGA - Des Moines Chapter**  
**Operating Statement for the Period Ended December 31, 2011**  
**For the Year Ending April 30, 2012**

	Budget	% of Budget	1st Qtr <u>2011</u>	2nd Qtr <u>2011</u>	Nov <u>2011</u>	Dec <u>2011</u>	3rd Qtr <u>2011</u>	Year to <u>Date</u>
<b><u>Revenues/Receipts</u></b>								
Interest	30.00	45%	12.81	0.48	0.18	0.15	0.33	13.62
Membership Fees	400.00	73%	244.20	-	48.75		48.75	292.95
Conference Revenues	21,000.00	34%	5,479.26	952.74	484.00	242.00	726.00	7,158.00
National Recruitment Scholar.	150.00	104%	-	-	156.00		156.00	156.00
Donations	350.00	48%	76.00	53.00	39.00		39.00	168.00
Member Meals	800.00	14%	-	114.00	-		-	114.00
<b>Total Revenues</b>	<b>22,730.00</b>		<b>5,812.27</b>	<b>1,120.22</b>	<b>727.93</b>	<b>242.15</b>	<b>970.08</b>	<b>7,902.57</b>
<b><u>Expenses</u></b>								
Conference Expenses	16,440.02	46%	7,272.05	155.42	94.40	34.17	128.57	7,556.04
Postage & Supplies	100.00	48%	3.84	-		44.00	44.00	47.84
Website Expense	0.01	0%	-	-			-	-
National PDC	1,475.00	88%	127.47	-	-	1,174.70	1,174.70	1,302.17
CGFM Study Guides	0.01	0%	-	-			-	-
Gifts	265.00	14%	37.80	-	-	-	-	37.80
Meals	800.01	35%	-	166.30	83.62	30.62	114.24	280.54
Donations	950.00	64%	176.00	253.00	7.00	169.00	176.00	605.00
Miscellaneous	60.00	117%	70.38	-			-	70.38
<b>Total Expenses</b>	<b>22,275.05</b>		<b>7,687.54</b>	<b>574.72</b>	<b>685.02</b>	<b>1,452.49</b>	<b>2,137.51</b>	<b>10,399.77</b>
<b>Revenues over (under)</b>								
<b>Expenses</b>	<b>454.95</b>		<b>(1,875.27)</b>	<b>545.50</b>	<b>42.91</b>	<b>(1,210.34)</b>	<b>(1,167.43)</b>	<b>(2,497.20)</b>
<b>Beginning Balance 5/01/11</b>	<b>10,549.93</b>							<b>10,549.93</b>
<b>Ending Balance 4/31/2011</b>	<b>11,004.88</b>							<b>8,052.73</b>



**AGA-Des Moines Chapter**  
**Balance Sheet**  
**As of December 31, 2011**

<b>Assets</b>	
Checking	628.48
Petty Cash	1.90
Savings	3,384.17
Certificate of Deposit	4,038.18
<b>Total Assets</b>	<b>8,052.73</b>
<b>Liabilities &amp; Equity</b>	
Equity-Unreserved	8,052.73
<b>Total Liabilities &amp; Equity</b>	<b>8,052.73</b>



## MARK YOUR CALENDAR FOR THE FOLLOWING AGA EVENTS!!!!

### Starting and Ending Times are usually:

**Lunch n' Learn (1 CPE) - 11:30 a.m. - 1:00 p.m.**

**Audio Conferences (2 CPE) - 1:00 p.m. - 3:00 p.m.**

**NASACT Webinars (2 CPE) - 1:00 p.m. - 3:00 p.m.**

1/11/2012	<b>Lunch 'n Learn:</b>	Karen Keninger - Director of the Iowa Department for the Blind - Department for the Blind's Resources and Services
	<b>Audio:</b>	Getting a Handle on Internal Controls
2/8/2012	<b>Lunch 'n Learn:</b>	Kristi Maitre, IRS, "IRS Update"
	<b>Audio:</b>	The New Stewardship Imperative - Federal Financial Management at the Crossroads
3/7/2012	<b>Lunch 'n Learn:</b>	Margaret Van Ginkel, Iowa State University, "Budgeting 101"
	<b>Audio:</b>	Data Mining to Prioritize Investigations of Contract Fraud
4/18/2012	<b>Lunch 'n Learn:</b>	Kent Stock - Community Savings Bank - "Leadership"
	<b>Audio:</b>	Find Strength in Numbers: Sampling Techniques to Improve Financial Audit, Control & Program Performance
4/25/2012	<b>Evening Meeting:</b>	John Seefeld, Jester Insurance - "Effects of Fraud in the Insurance Division"
		Location: TBA
5/9/2012	<b>Audio:</b>	Carlo Ponzi or Bernard Madoff - Who Was the Bigger Villain?
5/23/2012	<b>Audio:</b>	Ethical Dilemmas - Recognizing, Analyzing and Resolving Situations Where There Are Two Right Choices
5/24/2012	<b>Spring Ethics Conference - 7 CPE hours (Tentative date - details coming soon!)</b>	

### CGFM Exam 3 Review Course!! March 27 - 28, 2012

There is still time to register for the CGFM Exam 3 review course - Governmental Financial Management and Control!! The course will be taught live in Des Moines with remote sites in Council Bluffs, IA and Jefferson City, MO. Registration ends March 6!! For more information, <http://cgfm3review2012midwest.eventbrite.com/?>

### Regional Training Opportunities

#### Lincoln Chapter:

- ⇒ 4/25/2012: All day Spring PDC (8 CPE)
- ⇒ <http://www.lincolnneaga.org>

#### Omaha Metro Area Chapter:

- ⇒ 5/10/2012: AGA Spring 1/2 day PDC
- ⇒ <http://omahaaga.org>

### News

### AGA National News

#### AGA's 10th Annual National Leadership Conference -

February 16-17, 2012

Washington, D.C.

14 CPE Hours

[http://www.agacgfm.org/nlc\\_2012/index.htm](http://www.agacgfm.org/nlc_2012/index.htm)

#### Apply for 2012 National Academic Scholarships

Are you or a family member pursuing undergraduate or graduate studies in disciplines such as accounting, auditing, budgeting, economics, finance, information technology, public administration, etc? If so, consider applying for an AGA National Academic Scholarship today!! The application deadline is Friday, March 30, 2012. To obtain the application:

<http://www.agacgfm.org/membership/awards/>



## CEC Meeting Minutes | Thursday, November 10, 2011

(continued from page 2.)

Secretary

Community Service Chair

Charities this quarter are Shoes That Fit and the National Federation for the Blind. Also, Jolly Holiday Lights – 2 people signed up for evening of December 18<sup>th</sup>.

CGFM Chair

Person in charge needed for power point on

November 16 - Val

December 14 - Denise

January 11 - Patricia

Research/Historian Chair

By-laws/procedures updates

Committees begin meeting in September at CEC scheduled time.

Early Careers Chair

Scholarship procedure approval

Recap of Regional meeting

Scholarship application and essay – due??

Review Board

Webmaster

Accountability Chair

Other

SLMR & SLM

**Susan G. Komen Race for the Cure  
Des Moines, Iowa  
October 2011**





# The AGA Mini-Ledger

VOLUME 1, ISSUE 3

FEBRUARY 2012

## COMMUNITY SERVICE NEWS:

- **Charities this quarter are the Special Olympics and the National MS Society .**
- **Join the “AGA Racers” and walk in the MS Walk on Saturday, May 19. The walk begins at 9am on the State of Iowa Capitol Complex.**



## TRAINING EVENTS :

**Mar 7 - Lunch n' Learn  
& Audio Conference**

**Apr 18 - Lunch n'  
Learn & Audio  
Conference**

**Apr 25 - Evening  
meeting**

**See page 2 for training  
details.**



## From the President



Good Morning AGA!

I cannot believe another month is slipping by. We have a lot of fun coming up, so I will try to get through everything in as few words as possible.

First, I am happy to announce we almost have enough volunteers for our Chapter Executive Committee (CEC) next year. We have had a few volunteers step forward and are now just two positions short of a full board. The Program/Education chair is responsible for lining up our lunch-n-learn speakers. Don't worry - if you volunteer for this position, the rest of the CEC will help come up with ideas - we just need someone to help implement those ideas and ensure we don't have two speakers show up on the same day. The Program Director/Education chair is one of those special positions that gets to go to the Sectional Leadership Meeting in Las Vegas this year (but you have to volunteer quickly as all reservations need to be made soon). The second position open is the Communications Director. If you have any creativity in you, this position is for you. The Communications Director is responsible for putting together the quarterly newsletter and monthly mini-letters. This person also passes on any important accounting and AGA information to our members (and non-members). If you have any interest in these positions, please contact me as soon as possible.

Second, our charity this month is the Special Olympics of Iowa. We will be collecting donations at the March 7th meeting. In April and May, we will be collecting donations for the MS Society. We have also formed a team to walk on May 19th. The 5K walk is held at the Capitol Building. We would like people to sign up by May 18th so we can get information out on where to meet for a group photo. Usually we walk in the Susan G. Komen walk in October - I'm ready for a group picture of everyone **not** bundled up in mittens, hats, and coats. I hope you all can join us to create a world free from MS. Registration details are on page 2 of the newsletter.

Third, let's talk a little about the upcoming schedule. We had a pretty good showing at our meeting on February 8th. We welcomed our ever popular IRS representative Kristi Maitre to our meeting where she updated us on the changes in tax laws this year. On March 7th, we will have Margaret Van Ginkel from the Iowa State University Extension Office come talk about Budgeting 101. Lunch will be on us for this meeting. We will be providing pizza for everyone so please bring a guest. March is also CGFM month, so in celebration, we will also be having cupcakes. Following the speaker will be an audio conference on Data Mining. Also, our evening meeting has been set for April 25th. We will be having John Seefeld speak to us about the Effects of Fraud in the Insurance Division. For other scheduling updates, please see page 2.

Finally, we have set up our Spring Ethics Seminar on Thursday May 24th. Richard Stanley will speak to us about Business Ethics (worth 7 hours CPE). We will be meeting at the Stoney Creek Inn in Johnston (right next door to Wynnsong Theaters - so there shouldn't be any parking issues here). Richard is an international speaker. His client list includes NASA, the government of Switzerland, the State of Florida, Disneyworld, and thankfully the State of Iowa (which is how we were able to get him here.) As you noticed, Richard will be speaking the entire seminar. We did not save room for the audio conference. As a bonus, we will be offering the audio conference the day before - so there is a possibility to earn 9 hours of CPE for this event. Early bird registration is in effect until March 31st so please register soon. You can register by going to our website, [www.agadsm.org](http://www.agadsm.org), advancing the calendar to May and clicking on the 24th. This should bring you to the eventbrite registration page you are all so used to seeing.

I hope everyone is having a great February!

Natalie Storm, Chapter President

281-8047

[nstorm@dhs.state.ia.us](mailto:nstorm@dhs.state.ia.us)

# Training Calendar

## AGA - Des Moines Chapter Training Calendar

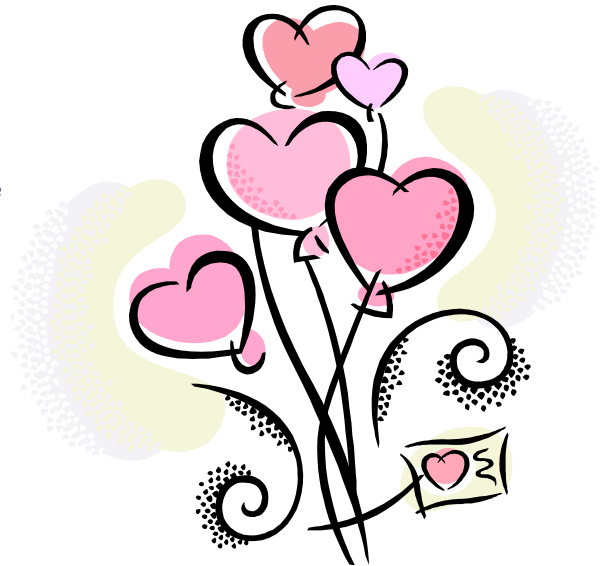
Starting and Ending Times are Usually:

Lunch n' Learn (1 CPE) - 11:30 am - 1:00 pm

Audio Conferences (2 CPE) - 1:00 pm - 3:00 pm

NASACT Webinars (2 CPE) - 1:00 pm - 3:00 pm

- 2/8/2012** **Lunch 'n Learn:** Kristi Maitre – “IRS update”  
**Audio:** The New Stewardship Imperative – Federal Financial Management at the Crossroads
- 3/7/2012** **Lunch 'n Learn:** Margaret Van Ginkel – Iowa State University, “Budgeting 101”  
**Audio:** Data Mining to Prioritize Investigations of Contract Fraud
- 4/18/2012** **Lunch 'n Learn:** Kent Stock – Community Savings Bank – “Leadership”  
**Audio:** Find Strength in Numbers: Sampling Techniques to Improve Financial Audit, Control and Program Performance
- 4/25/2012** **Evening Meeting:** John Seefeld, Jester Insurance –  
 “Effects of Fraud in the Insurance Division”  
 Location to be announced
- 5/9/2012** **Audio:** Carlo Ponzi or Bernard Madoff - Who Was the Bigger Villain?
- 5/23/2012** **Audio:** Ethical Dilemmas - Recognizing, Analyzing and Resolving Situations Where There Are Two Right Choices
- 5/24/2012** **Spring Ethics Conference:**  
 7 hours of CPE  
 Stoney Creek Inn & Conference Center, Johnston, IA  
 Pricing:
- Member (early-bird) \$70
  - Member (regular) \$80
  - Nonmember (early-bird) \$85
  - Nonmember (regular) \$95
  - Register by March 31 to receive the early-bird rate.



To join the “AGA Racers” in the MS Walk on May 19, go to the following website and click “Join the Team.” May 18 is the deadline to join the team.

[http://main.nationalmssociety.org/site/TR/Walk/MNMWalkEvents/1680371143?pg=team&fr\\_id=17886&team\\_id=280963](http://main.nationalmssociety.org/site/TR/Walk/MNMWalkEvents/1680371143?pg=team&fr_id=17886&team_id=280963)

If you have any questions about the registration process, contact Natalie at [nstorm@dhs.state.ia.us](mailto:nstorm@dhs.state.ia.us)



Volume 33 Number 3

Feb 2012-Apr 2012

## President's Message



Welcome all to the final full newsletter of the year. We'll have one more mini-letter before I turn over the reigns to our incoming President, Deb Schroeder. So you are almost done wading through my gibberish - Congratulations :)

I am pleased to announce we are only one position short of a full board next year. We had a few long-time members who in the past few years had desired a much deserved break and you made it happen. Thank you to all who volunteered! For those of you who want to show your creative side, this last open position is for you! We need an individual to put together our quarterly newsletter and monthly mini-letters. Due dates for information are at your discretion so we work around your schedule! Please e-mail me if you'd be willing to help out next year.

In March, we celebrated CGFM month. This month, Certified Government Financial Managers are celebrated for their service and dedication to all forms of government - federal, state, local, etc. all throughout the country. We have had a good year inducting individuals into the CGFM ranks. As of the time I write this newsletter, we had 3 individuals (including myself) pass the exams necessary to become certified. Congratulations to Richa Goel and Kent Farver for joining the club! Des Moines has been bringing the CGFM review courses to the area. The review course for the 3rd exam will take place on March 27th and 28th in the Ola Babcock building. Go to our website ([www.agadsm.org](http://www.agadsm.org)) for more information. Unlike popular belief, you do not have to take these exams in order. There's no time like the present to get started.

We have a few important upcoming events. In March, we welcomed Margaret Van Ginkel as she talked us through Personal Budgeting 101. On April 18th, we will welcome Kent Stock with the Community State Bank in Cedar Rapids as he presents Leadership. This will be followed by an audio conference discussing audit sampling techniques at 1:00. Then on April 25th, we will be having our year-end celebration at Okoboji Bar & Grill on SE 14th St. We will welcome our guest speaker John Seefeld of Jester Insurance as he talks about the impact of fraud on insurance companies. This event is free to attend, with each individual responsible for their meal. We do, however, ask that you register on our website so we can give the restaurant a count of the individuals coming. Social hour (or half hour) begins at 5:30 with drinks and food at 6:00. Our speaker will begin his presentation at 7:00. Please come and bring a guest!!

Also on the horizon is our annual spring ethics conference. We will be trying out another new venue in Johnston - the Stoney Creek Inn right across the street from Wynnsong Theaters. We will welcome Richard Stanley as he walks us through Business Ethics. There is also a 2 hour audio conference the day before on the capitol complex for those of you wanting a few more hours of ethics. Please go to our website for registration. Early Bird Registration ends on March 31st so take a quick minute to get registered.

My final announcement is our charity this month. Last month we raised money for the Special Olympics of Iowa. This month (and in May), we will be raising money for the National MS Society. We will also be walking in the MS walk on May 19th. [Click here to view the team page for AGA Racers](#) or go to the website [www.nationalmssociety.org](http://www.nationalmssociety.org) and select "walk MS - Register today!" to sign up. Help us walk to create a world free from MS.

As always, please call or e-mail me with any questions you have.

Natalie Storm  
Des Moines Chapter President  
[nstorm@dhs.state.ia.us](mailto:nstorm@dhs.state.ia.us) 515-281-8047



## Upcoming Events!!

**Jessie Parker Bldg.  
Knudsen Room  
Des Moines, IA**

**Wed., Apr. 18, 2012**

### Lunch 'n Learn

**11:30 - 1:00**

"Leadership"

Recommended CPE: 1 Hr.

### Audio Conference

**1:00 - 3:00**

"Finding Strength in Numbers:  
Sampling Techniques to Improve  
Financial Audit, Control and  
Program Performance"

Recommended CPE: 2 Hrs.

**Okoboji Bar & Grill  
SE 14th St., Des Moines**

**Wed., Apr. 25, 2012**

### Year-End Evening Meeting

**5:30 - 8:30**

"Impacts of Fraud in the  
Insurance Division"

Recommended CPE: 1 Hr.

## Inside this Issue:

Chapter Executive Committee	2
CEC Meeting Minutes.....	2
CGFM Study Guides.....	3
Chapter Meeting Minutes.....	4
Community Service.....	5
Chapter Financials.....	6
Training Calendar.....	7
National News.....	7
Member/Scholarship Recognition.....	8

**Chapter Executive Committee****Chapter President**

Natalie Storm, CPA

nstorm@dhs.state.ia.us

Department of Human Services

**President-Elect & Chapter Recognition Chair**

Deb Schroeder

schroeder@northpolk.org

North Polk Community School District

**Immediate Past President**

Patricia Townsend, CPA

patricia.townsend@iowa.gov

Iowa Communications Network

**Secretary**

Khristan Kaufman, CPA, CFE

khristan.kaufman@ia.usda.gov

USDA, GIPSA, &amp; P&amp;SP

**Treasurer**

Natalie Storm, CPA

nstorm@dhs.state.ia.us

Department of Human Services

**Accountability Outreach Chair**

Janice Jensen, CPA, CGFM

janice.jensen@iowa.gov

Iowa Vocational Rehabilitation

**By-Laws & Procedures Director & Historian**

Janice Evans, CPA, CGFM

janice.evans@iowa.gov

Department of Education

**Communications Director**

Kim Knight, CPA

kimberly.knight@iowa.gov

Department of Administrative Services

**Community Services Director**

Daniel Durbin, CPA

daniel.durbin@auditor.state.ia.us

Auditor of State

**Early Careers Director**

Valerie Wedgeworth

valerie.wedgeworth@iowa.gov

Iowa Vocational Rehabilitation

**Membership Director & Recognition Chair**

Jenny Wall, CPA

jenny.wall@auditor.state.ia.us

Auditor of State

**Professional Certification Director**

Denise Ragias, CGFM

denise.ragias@iowa.gov

Department of Education

**Program & Technical Meeting Director**

VACANT

**Website Chair**

Patricia Townsend, CPA

patricia.townsend@iowa.gov

Iowa Communications Network

**CEC Meeting Minutes | Thursday, February 9, 2012**

President Natalie Storm opened the February 9, 2012 meeting of the Chapter Executive Committee (CEC). Other members in attendance were Patricia Townsend, Kim Knight, Denise Ragias, Jenny Wall, Val Wedgeworth, Janice Jensen and Deb Schroeder.

**Chapter President:** This is the last meeting of the 2011-2012 CEC, the next CEC meeting is tentatively set for Thursday, May 10<sup>th</sup>. Incoming President Deb Schroeder will let CEC members know the 2012-2013 meeting schedule. Meeting date and time may change.

**2012 -2013 CEC** – The following 5 positions are vacant: President-Elect, By-Laws & Procedures Director & Historian, Communications Director, Community Services Director, and Programs & Technical Meeting Director. Filled positions are as follows:

**President** – Deb Schroeder**Past President** – Natalie Storm**Secretary** – Valerie Wedgeworth**Treasurer** – Denise Ragias**Professional Certification Director** – Lilia Kryuchkova**Early Careers Director** – Patricia Townsend**Accountability Outreach Chair** – Janice Jensen**Membership Director & Recognition Chair** – Jenny Wall**Website Co-Chairs** – Denise Ragias & Patricia Townsend**Membership retention or additions – scholarship money use.** We have \$159.

We will use this to purchase pizza and pop for those attending the March 7, 2012 lunch n' learn.

**President Elect:** Please remember to share with Deb when you submit reports to National or communicate with National so we can get points for the CRP.

**Treasurer:** \$1,023.86 in the checking account; \$3,384.33 in the savings account; \$4,038.18 in CD's

**Travel to Kansas City & Budget Amendments** – A motion was made (Kim) and seconded (Denise) to amend the budget and pay for the mileage and parking incurred by those attending the SLMR in Kansas City totaling \$187.74. All in favor. Motion carried.

**Payment for passing CGFM exams** – to date we have two who have passed – Richa Goel and Kent Farver. After April 30, the \$500 scholarship will be split between Richa and Kent (and others if passing by then). We are not aware of other members nearing completion of the CGFM.

**Newsletter:** News articles due by March 15<sup>th</sup> for the quarterly newsletter to go out by March 28<sup>th</sup>. The mini-newsletter for February needs to be updated to include the May 24 speaker name, location of the conference, etc.

**Program:**

March 7th lunch n' learn speaker Margaret Van Ginkel, "Budgeting 101." AGA will be providing pizza and pop for attendees. Bring membership applications to the meeting!

NASACT conference - January 18th – Workplace Ethics: Understanding Your Responsibilities – Natalie contacted NASACT and this can be purchased online. It is not yet available. We will look into purchasing at a later date.

Final meeting – we have a speaker, have a date (April 25th), need location?? Natalie will check with Baratta's and the south side Des Moines Okoboji Bar & Grill. Janice Jensen will check on pricing at Prairie Meadows. Expecting 30-40 people minimum and need to have ability to have a projector used (white wall or screen). Natalie will send an email to remind those who won a free dinner at the evening meeting.

(Continued on page 3.)

## CEC Meeting Minutes | Thurs, Feb 9, 2012

(continued from page 2)

May seminar – Planning committee met – the conference will be May 24th at Stoney Creek Inn, Johnston. There will be 1 presenter for 7 hours CPE. Lunch provided onsite.

Budget presentation – Speaker requested a projector, drop down screen and flip chart. All of the speaker travel costs are included in his flat fee.

Fee Schedule – same as last year.

Early-bird – \$70 (member) and \$85 (non-member)

Regular – \$80 (member) and \$95 (non-member)

Audio – any paying attendee of the May 24 seminar can attend the 2-hour audio conference “Ethical Dilemmas – Recognizing, Analyzing and Resolving Situations Where There Are Two Right Choices” for \$5. This audio is only available to the May 24<sup>th</sup> seminar attendees.

A motion was made (Kim) and seconded (Denise) to charge the \$70/\$85 early-bird and \$80/\$95 regular for the seminar, \$5 for the audio on May 23 for only those paying seminar attendees and to approve the budget as presented for the May seminar.” All in favor. Motion carried.

The speaker would like to know what we want our attendees to walk away from the session with...what do we want them to learn? If you have ideas, let Natalie know.

**Community Service:** Charities this quarter are Special Olympics and the National MS Society. Team Name for the MS walk will be AGA Racers. The race is on May 19. Natalie is setting up the team.

**CGFM Chair:** Person in charge needed for power point. Natalie will request volunteers at the meeting if Voc Rehab staff are not available. If no one wants to run the power point, we will just listen to the audio as most attendees follow along on their handouts.

March 7, April 18, May 9

**CGFM Review Course contract for March 27/28 review course.** We need to sign this by Feb 16 so travel arrangements can be made by the speaker. The cost is \$6,000 and we need 14 attendees. Would prefer 17 attendees. So far we have 7 signed up (Des Moines – 5, Nebraska 2). There are sites in Jefferson City, Council Bluffs and Des Moines. Patricia will contact other chapters to get firm commitment because we can't sign the contract with just a few attendees our chapter will be out the difference.

**CGFM Recognition Month** – March. A motion was made (Kim) and seconded (Patricia) to purchase cupcakes for the March 7 meeting to celebrate CGFM month.

**Research/Historian Chair:** Janice and Janice have been reviewing the by-laws/procedures. They are thru article 9. One key item is to remember we need to formally document email votes. This could be done via discussion at a subsequent meeting.

**Early Careers:** Scholarship granted to Janae Holtkamp, UNI accounting undergraduate student. Val will invite her to the March 7 or April 25 meetings for recognition. Natalie will mail the check to Janae.

**Accountability Chair:** National Award Nominations are due April 13. A motion was made (Janice) and seconded (Val) to nominate Natalie for the Chapter Service Award. Let Natalie know if there are other awards you think we should make nominations for.

### Other Items:

**SLM** – 5 people can go (President Elect – Deb, CGFM – Lily, Membership – Jenny, Education – vacant and Accountability – Janice). Natalie will contact Lily and Jenny to find out if they want to go. If they do not, other CEC members will be substituted. Registration is due mid-March.

### Interested in becoming a Certified Government Financial Manager (CGFM)?

The Des Moines AGA Chapter is here to help. General information about the CGFM program and exam is available on our website at <http://www.agadsm.org/> or the national website at <http://www.agacgfm.org/cgfm/cgfmdefault.aspx>.

To aid in your studies, the Des Moines AGA Chapter has two study guides for the newly revamped CGFM exam. The study guides are available to check out to anyone interested.

Scholarships are also available to Chapter members, in good standing, who successfully complete the CGFM exam (Scholarship information is available at the above referenced website).

If you have any questions about the program, please contact Denise Ragias: 281-4741

[Denise.Ragias@iowa.gov](mailto:Denise.Ragias@iowa.gov)



Patricia Townsend, Jenny Wall, Denise Ragias, Natalie Storm



## Chapter Meeting Minutes - Feb. 8, 2012

The Des Moines Chapter AGA met at the Jessie Parker Building in the Parker-Knudsen Room on February 8, 2012 for a combined "Lunch 'n Learn" and Audio Conference. President Natalie Storm opened the meeting.

### Announcements:

**Fundraisers & Community Service:** Community service focus for the months of January and February is the National Federation of the Blind. Contributions will be accepted at the meetings. Envelope was passed to collect donations for National Federation of the Blind.

The Chapter received a nice thank-you note from Shoes That Fit which was a previous organization collected for. The next fundraiser will be Special Olympics of Iowa followed by National MS Society. AGA will be forming a team to the upcoming MS walk so be on the lookout to join our team!

**CEC Volunteers:** The chapter is STILL looking for volunteers to serve on the CEC! If you have any interest PLEASE sign up! Four volunteers will be selected to attend a meeting in Las Vegas. Members were asked to contact Natalie with any questions.

**Upcoming Events:** The next Lunch-n-Learn is scheduled for March 7<sup>th</sup>. The speaker is from Iowa State University Extension and will be delivering a presentation on budgeting (main emphasis on personal finances).

*Section Three GCFM Review* course is being offered March 27<sup>th</sup> and March 28<sup>th</sup>. Registration can be completed online for anyone interested in attending to become a CGFM or just to learn more about auditing (obtain 16 CPE's). Contact Patricia Townsend with any questions.

*Evening Meeting* will be held the last Wednesday in April with the location TBD.

*Spring Seminar* will be held Thursday May 24<sup>th</sup> on 86<sup>th</sup> Street in Johnston. The training will be delivered through live presentation (rather than part audio as done in the past) and will offer 7 hours of CPE.

**Job Opportunities:** Past President Patricia Townsend shared that ICN currently has a job opening.

**Guest Speaker:** Natalie introduced our guest speaker, Kristy Maitre. Ms. Maitre gave informed us on the tax updates for the 2011 year in her annual "IRS Update". The audio conference that followed was entitled "the New Stewardship Imperative – Federal Management at the Crossroads."

There were 27 members, 7 guests, and 1 speaker present. The name drawn for a free meal at the year-end evening meeting was Su McCurdy.

## Chapter Meeting Minutes - Mar. 7, 2012

The Des Moines Chapter AGA met at the Jessie Parker Building in the Parker-Knudsen Room on March 7, 2012 for a combined "Lunch 'n Learn" and Audio Conference. President Natalie Storm opened the meeting. The pizza lunch was provided by National as a "thank-you" to all members and potential members to demonstrate some of the many benefits of being an AGA Member. March is also CGFM month, so cupcakes were provided to celebrate!

### Vote:

A motion was made to approve the CEC as presented on the board. The motion carried. The 2012-2013 CEC Officers include:

President – Deb Schroeder	President Elect – Gayle Isaac
Past President – Natalie Storm	Secretary – Valerie Wedgeworth
Treasurer – Denise Ragias	CGFM Coordinator – Lily Kryuchkova
Chapter Recognition – Natalie Storm	Historian – Khristan Kaufman
Membership and Member Recognition – Jenny Wall	Programs and Education – Deb Krueger
Communications – <b>VACANT</b>	Chapter Website – Patricia Townsend & Denise Ragias
Early Careers – Patricia Townsend	Community Service – Daniel Durbin
Accountability Outreach – Janice Jensen	

### Announcements:

**Fundraisers & Community Service:** Community service focus for March is the Special Olympics. Envelope was passed to collect donations for Special Olympics. National MS Society will be the charity focus for the months of April and May. Join the "AGA Racers" and walk in the MS Walk on Saturday, May 19<sup>th</sup>. The walk itself is FREE to attend.

**Upcoming Events:** The next Lunch-n-Learn is scheduled for April 18<sup>th</sup>. Kent Stock from Community Savings Bank will talk about Leadership.

*Evening Meeting* to present Chapter Awards will be held April 25<sup>th</sup> at the Okoboji Grill on SE 14<sup>th</sup> Street. The guest speaker will deliver a presentation on insurance company fraud. Guests are welcome to attend.

*Spring Seminar* will be held Thursday May 24<sup>th</sup> on 86<sup>th</sup> Street in Johnston. The training will be delivered through live presentation (rather than part audio as done in the past) and will offer 7 hours of CPE.

**Guest Speaker:** Natalie introduced our guest speaker, Margaret Van Ginkel from the Iowa State University Extension Office. Ms. Van Ginkel gave a wonderful presentation on "Be Smart With Your Money - Budgeting 101." If anybody is interested in receiving a copy of the power point presentation you may contact Natalie Storm. The audio conference that followed was entitled "Data Mining."

There were 25 members, 4 guests, and 1 speaker present. The name drawn for a free meal at the year-end evening meeting was Patricia Townsend.



## Community Service Corner

January and February's community service focus was on **The National Federation for the Blind**. The National Federation for the Blind raises money to improve blind people's lives through advocacy, education research, technology and programs encouraging independence and self-confidence. A total of \$158 was collected at our meeting. In addition a \$100 chapter donation and a \$258 National AGA donation was requested. Grand total of \$516.



The March community service focus was on the **Special Olympics of Iowa**. Donations in the amount of \$112 were collected at the March meeting which will be added to the \$100 chapter donation. A National AGA match will be requested in the amount of \$212.

Our final community service event of the program year will be the National MS Society. We will be taking donations at our meetings in April and May. We have also formed a team in the Des Moines MS walk. Please join us May 19<sup>th</sup> as we walk to create a world free of MS. [Click here to view the team page for AGA Racers](#). An email was sent to members on 2/10/12 with participation details. Contact Natalie at [nstorm@dhs.state.ia.us](mailto:nstorm@dhs.state.ia.us) if you need more information about the race.



Thanks to everyone for their donations and support this year!

### **AGA Members can Earn Points as follows:**

#### **ATTENDANCE:**

- Regular chapter meeting (20 points)
- Bonus for attending more than 4 meetings (15 points)
- Bonus meeting (30 points)
- For each guest attending the meeting (10 points with a maximum of 20 points per guest per member)

#### **MEMBERSHIP:**

- Each new member sponsored and accepted (35 points)

#### **CHAPTER PROGRAMS:**

- Member who is a speaker or panel participant at regular meeting (50 points)

#### **EDUCATIONAL:**

- Each chapter sponsored presentation at high schools or colleges (50 points)
- Conducting chapter workshop or financial management in addition to regular meeting (50 points)
- Attending an AGA-sponsored seminar or training session (35 points)

#### **PUBLICATIONS:**

- Manuscript of research project accepted by National Research Committee (100 points)
- A financial management article at least 300 words published in newsletter or other AGA publication (50 points)
- Article on any topic of general interest of at least 200 words published in chapter newsletter (30 points)

#### **SERVICE:**

- Participating in an AGA sponsored community service project (15 points)
- Participating in a Non-AGA sponsored community service project (5 points with a maximum of 25 points)
- Service on any board, committee, or other chapter position other than an office (40 points)

The membership recognition director must be notified if you attend an AGA sponsored seminar or training session with a chapter other than the Des Moines chapter, or if you participate in a Non-AGA sponsored community service project to properly award the membership recognition points.

To check your total points or to report activities or events you have participated in, please contact Jenny Wall at:

[Jenny.Wall@auditor.state.ia.us](mailto:Jenny.Wall@auditor.state.ia.us)

**AGA - Des Moines Chapter**  
**Operating Statement for the Period Ended March 31, 2012**  
**For the Year Ending April 30, 2012**

	Budget	% of Budget	1st Qtr 2011	2nd Qtr 2011	3rd Qtr 2011	February 2012	March 2012	Year to Date
<b><u>Revenues/Receipts</u></b>								
Interest	30.00	46%	12.81	0.48	0.49	0.13		13.91
Membership Fees	400.00	76%	244.20	-	58.75			302.95
Conference Revenues	21,000.00	46%	5,479.26	952.74	1,114.00	254.00	1,907.00	9,707.00
National Recruitment	150.00	104%	-	-	156.00			156.00
Donations	350.00	110%	76.00	53.00	113.00	111.00	31.00	384.00
Member Meals	800.00	26%	-	114.00	-	90.00		204.00
<b>Total Revenues</b>	<b>22,730.00</b>		<b>5,812.27</b>	<b>1,120.22</b>	<b>1,442.24</b>	<b>455.13</b>	<b>1,938.00</b>	<b>10,767.86</b>
<b><u>Expenses</u></b>								
Conference Expenses	16,440.02	49%	7,272.05	155.42	174.97	50.08	471.01	8,123.53
Postage & Supplies	100.00	48%	3.84	-	44.00			47.84
Website Expense	0.01	0%	-	-	-			-
National PDC	1,475.00	104%	127.47	-	1,412.44	-	-	1,539.91
Scholarship	2,185.00	46%	-	-	500.00	500.00	-	1,000.00
CGFM Study Guides	0.01	0%	-	-	-			-
Gifts	265.00	14%	37.80	-	-	-	-	37.80
Meals	800.01	46%	-	166.30	111.36	89.62	(2.00)	365.28
Donations	950.00	100%	176.00	253.00	176.00	100.00	248.00	953.00
Miscellaneous	60.00	117%	70.38	-	-			70.38
<b>Total Expenses</b>	<b>22,275.05</b>		<b>7,687.54</b>	<b>574.72</b>	<b>2,418.77</b>	<b>739.70</b>	<b>717.01</b>	<b>12,137.74</b>
<b>Revenues over (under)</b>	<b>454.95</b>		<b>(1,875.27)</b>	<b>545.50</b>	<b>(976.53)</b>	<b>(284.57)</b>	<b>1,220.99</b>	<b>(1,369.88)</b>
<b>Beginning Balance 5/01/11</b>	<b>10,549.93</b>							<b>10,549.93</b>
<b>Ending Balance 4/31/2012</b>	<b>11,004.88</b>							<b>9,180.05</b>



**AGA-Des Moines Chapter**  
**Balance Sheet**  
**As of March 31, 2012**

<b>Assets</b>	
Checking	1,109.91
Petty Cash	2.50
Savings	4,029.46
Certificate of Deposit	4,038.18
<b>Total Assets</b>	<b>9,180.05</b>
<b>Liabilities &amp; Equity</b>	
Equity-Unreserved	9,180.05
<b>Total Liabilities &amp; Equity</b>	<b>9,180.05</b>

## MARK YOUR CALENDAR FOR THE FOLLOWING AGA EVENTS!!!!

### Starting and Ending Times are usually:

**Lunch n' Learn (1 CPE) - 11:30 a.m. - 1:00 p.m.**

**Audio Conferences (2 CPE) - 1:00 p.m. - 3:00 p.m.**

**NASACT Webinars (2 CPE) - 1:00 p.m. - 3:00 p.m.**

- 4/18/2012 Lunch 'n Learn:** Kent Stock - Community Savings Bank - "Leadership"  
**Audio:** Find Strength in Numbers: Sampling Techniques to Improve Financial Audit, Control & Program Performance
- 4/25/2012 Evening Meeting:** John Seefeld, Jester Insurance - "Effects of Fraud in the Insurance Division"  
 Location: Okoboji Bar & Grill, SE 14th St., Des Moines  
 5:30 - 6:00 - Happy Hour  
 6:00 - 7:00 - Meal  
 7:00 - 8:00 - Speaker
- 5/9/2012 Audio:** Carlo Ponzi or Bernard Madoff - Who Was the Bigger Villain?
- 5/23/2012 Audio:** Ethical Dilemmas - Recognizing, Analyzing and Resolving Situations Where There Are Two Right Choices
- 5/24/2012 Spring Ethics Conference - 7 CPE hours**  
 Stoney Creek Inn & Conference Center, Johnston IA  
 Early-bird Rates (registrations through March 31):  
     \$70 - Member  
     \$85 - Nonmember  
 Regular Rates (registrations after March 31):  
     \$80 - Member  
     \$95 - Nonmember

**2 CPE for \$5!!!**

Spring Ethics registrants, you can add on the May 23 audio conference, *Ethical Dilemmas - Recognizing, Analyzing and Resolving Situations Where There Are Two Right Choices* for \$5!!

### March is CGFM Month

To recognize the CGFM Program and its accomplishments, AGA has declared March as "CGFM Month." This annual initiative is a great example of AGA leadership and teamwork and continues to spread the word about the CGFM Program

### Regional Training Opportunities

#### Lincoln Chapter:

- ⇒ 4/25/2012: All day Spring PDC (8 CPE)
- ⇒ <http://www.lincolneaga.org>

#### Omaha Metro Area Chapter:

- ⇒ 5/10/2012: AGA Spring 1/2 day PDC
- ⇒ <http://omahaaga.org>



### AGA National News ( <http://www.agacgfm.org> )

#### Don't Miss the Best Training Event of the Year



AGA's 61st Annual PDC, **Training to Solve Today's Fiscal Challenges**, is the premier education and training event for government financial managers and accountability professionals nationwide. Make plans now to join AGA in San Diego, July 29-Aug. 1, for:

- **More than 80 training sessions.** Learn strategies for improving performance in a cost-constrained environment.
- **Earn 24 CPE hours.**

#### It's Time to Renew; Online Process is Quick and Easy

The AGA membership year comes to a close on March 31 so if you have not already renewed, now is the time.

## Citizen Centric Reporting

Citizen Centric Reporting (CCR) is the four page report initiated by AGA National several years ago to make governments more accountable to their citizens and will help Americans become better educated and better able to participate in government activities. The Citizen Centric based reports detail government finances in a visually appealing, clear and understandable four-page document. The suggested format shows community information - such as population figures, regional characteristics and government goals for the community - on the first page. The second page presents a performance report on key missions and service. The third page details cost and revenue information and the fourth looks forward to the year ahead. This report is helpful for non-profits and professional organizations as well to tell the organization's story to members and interested parties.

If you want to get involved with CCR to get more experience and/or understanding, but don't know how to start, contact Janice Jensen, Des Moines Chapter Accountability Outreach Chair at [Janice.Jensen@iowa.gov](mailto:Janice.Jensen@iowa.gov) or 515-281-4087. Janice will be preparing the Des Moines Chapter AGA CCR later in the summer and is looking for others interested in the opportunity to help. Other short-term project opportunities are available to promote CCR such as finding an incentive to challenge members to get Citizen Centric Reporting started in their local governments or other organizations.

### AGA Academic Scholarship Award Winner for 2012

We are pleased to announce that the winner of the \$500.00 award this year is Janae Holtkamp. Janae is a junior at the University of Northern Iowa (UNI) majoring in Accounting and Management. Janae has been on the Dean's List each semester she has attended UNI and maintains a 3.54 GPA.

Janae is also very involved in extracurricular activities at UNI such as the Student Leadership Center, Connecting Alumni to Students, fundraising activities, the Accounting Club and Resident Assistant.

We congratulate Janae and wish her the best in her Accounting/Management Career!!

*Congratulations!*



### Member Recognition

The top 4 members and their points as of March 2012 are:

1. 550 - Cheryl Mather
2. 505 - Cindy Weber & Val Wedgeworth
3. 500 - Michelle Wendel

