

# OZARKS CHAPTER

Volume XI, Issue 2

October 2013

We're on the Web!  
OzarksAGA.org

October



2013

### Inside This Issue:

Community Service	2
Future Training Dates	3
Report From Treasurer	4
CEC Minutes	5
Local Member News	6
CGFM Test 2 Training	7

See Page 3 for information on our October Fall Seminar!

## Message from the President

What a beautiful fall we are having! It doesn't really feel like the right weather for football and bonfires. And in October, everything turns pink in honor of Breast Cancer Awareness month. As a breast cancer survivor, this has special meaning to me. I am involved in a lot of volunteer and fundraising activities and honored this year to be selected as one of the Profiles of Hope for the Making Strides for Breast Cancer walk on October 26. I hope that some of you can come out and join me for this walk this year to benefit the American Cancer Society. Or that you can give something (even time) to support cancer research and assist patients in their time of need. And ALWAYS insist on women getting their annual mammograms. This includes daughters, grandmothers, aunts, and cousins.



Tina McManus

The tour of the NOAA facility in September was very educational. John has been working very hard putting together the speakers for the October seminar on October 17<sup>th</sup>. The schedule will be finalized soon. It will be held at the Cooper Sports Complex. Four hours of CPE will be available and this seminar funds our scholarships. On November 14<sup>th</sup>, we will be touring Spring Net (the underground facility owned by City Utilities). We will need to know in advance (by a day or two) who will be attending) in order to get clearance and you must bring a photo ID.

In November and January, we will be working on our membership drive. If you bring a guest to either meeting, they will receive a free meal, and you will receive a gift certificate from Starbucks.

The CEC is working hard to make this a great year for all of you. We are always open to suggestions – especially potential topics or speakers for our seminars. So please feel free to contact any of us!

*Tina McManus*

**Chapter Executive Committee**

**Chapter President**

Tina McManus

[TinaMcManus@Missouristate.edu](mailto:TinaMcManus@Missouristate.edu)

Ph: 417-836-4232

**President-Elect**

Debra Burling

[dburling@spsmail.org](mailto:dburling@spsmail.org)

Ph: 417-523-0054

**Secretary**

Brandi Aldridge

[brichmond@jcoomis.org](mailto:brichmond@jcoomis.org)

Ph: 417-841-1899

**Treasurer**

Greg Drake

[gdrake@spsmail.org](mailto:gdrake@spsmail.org)

Ph: 417-523-0004

**Immediate Past President**

Bob Wells

[rwells496@spsmail.org](mailto:rwells496@spsmail.org)

Ph: 417-523-0161

**Accountability Chair**

Rick Findley

[rickfindley@yahoo.com](mailto:rickfindley@yahoo.com)

Ph: 417-546-7287

**Director of Education**

John Everest

[jeverest@spsmail.org](mailto:jeverest@spsmail.org)

Ph: 417-523-0519

**Director of Membership**

Justin Hill

[jrhill@greencountymo.org](mailto:jrhill@greencountymo.org)

Ph: 417-868-4084

**Director of Professional Certification**

Jon Cummings

[jcumplings@dilmcpa.com](mailto:jcumplings@dilmcpa.com)

Ph: 417-882-0904

**Director of Communications**

Brandie Fisher

[bfisher@springfieldmo.gov](mailto:bfisher@springfieldmo.gov)

Ph: 417-864-1852

**Director of Community Services**

Pat Monday

[Pat.Monday@cityutilities.net](mailto:Pat.Monday@cityutilities.net)

Ph: 417-831-8719

**Early Careers Chair**

Paul Essel

[jackobby@yahoo.com](mailto:jackobby@yahoo.com)

Ph: 417-836-8873

**Website**

Teresa Allen, CGFM

[tallen@springfieldmo.gov](mailto:tallen@springfieldmo.gov)

Ph: 417-864-1631

# October Community Service Information

## October Food Pantry Collection

**At the October Seminar AGA will be collecting canned goods for Christian Action Ministries.**

**Each Year Christian Action Ministries food pantry distributes hundreds of pounds of food and grocery products to hungry families in living in Taney County.**

### Hunger and Poverty Facts for the United States

More than one in seven people in the United States lives below the poverty line, which is \$22,133 for a family of four in 2010. More than one in five children in the United States lives below the poverty line.

Half of all Americans will live in poverty some time before age 65.

14.5 percent of U.S. households struggle to put enough food on the table. More than 48 million Americans – including 15.9 million children - live in these households.

More than one in five children is at risk of hunger



Check out career opportunities on page 6!

**Interested in the CGFM?**

Contact Jon Cummings, CGFM Chair, to inquire about opportunities in our area.





**Association of Government Accountants  
Ozarks Chapter  
Fiscal Year 2014  
July 1, 2013 Through September 30, 2013**

<b>Revenues:</b>	<b>FY14 Budget Revenue</b>	<b>FY14 Actual Revenue</b>	<b>Sept 2013 Revenue</b>
Chapter Dues	320.00	\$ 68.75	\$ -
Monthly meetings	1,400.00	\$ 205.00	\$ 205.00
Seminars:			
Fall Seminar	1,260.00	\$ -	\$ -
Spring Membership Seminar	6,120.00	\$ -	\$ -
Spring Seminar Sponsorships	1,000.00	\$ -	\$ -
Other Revenues:			
Recruiting stipend from National AGA	150.00	\$ 153.00	\$ 153.00
Charity Fundraisers	-	\$ -	\$ -
Miscellaneous Revenue	50.00	\$ 285.00	\$ 60.00
Interest	25.00	\$ 0.90	\$ 0.25
<b>Total Revenues</b>	<b>\$ 10,325.00</b>	<b>\$ 712.65</b>	<b>\$ 418.25</b>

<b>Expenses:</b>	<b>FY14 Budget Expense</b>	<b>FY14 Actual Expense</b>	<b>Sept 2013 Expense</b>
Monthly Meeting Expenses:	1,000.00	\$ 113.17	\$ 113.17
Seminar Expenses:			
Fall Seminar	300.00	\$ -	\$ -
Spring Membership Seminar-Expenses	1,500.00	\$ -	\$ -
Spring Membership Seminar-Dues	3,240.00	\$ -	\$ -
Community Service Expense	350.00	\$ -	\$ -
Scholarships:			
Educational (Post Secondary Ed) Scholarships	1,500.00	\$ -	\$ -
CGFM (Member) scholarships	400.00	\$ -	\$ -
PDC (CEC) Travel Stipend	1,585.00	\$ 1,310.97	\$ -
Membership Drive Expense	150.00	\$ -	\$ -
Replenish speaker gifts	300.00	\$ 377.98	\$ -
Miscellaneous Expense	-	\$ -	\$ -
<b>Total Expenses</b>	<b>\$ 10,325.00</b>	<b>\$ 1,802.12</b>	<b>\$ 113.17</b>

<b>Change in Fund Balance:</b>	<b>Projected</b>	<b>Actual</b>	<b>Actual</b>
Beginning	6,686.47	6,686.47	\$ 5,291.92
Revenue	10,325.00	712.65	\$ 418.25
Expenses	(10,325.00)	(1,802.12)	\$ (113.17)
Net Change	-	(1,089.47)	\$ 305.08
Ending	<b>\$ 6,686.47</b>	<b>\$ 5,597.00</b>	<b>\$ 5,597.00</b>

**AGA - Your Best Connection for Quality, Affordable Continuing Education**



## CEC Minutes

**September 26, 2013**      **CEC Meeting**

**12:00 PM** – 2<sup>nd</sup> floor west conference room - Busch Building at 840 Boonville

**Attendance:**

Tina McManus, Debra Burling, Rick Findley, Pat Monday, Teresa Allen, Brandie Fisher, Paul Essel, John Everest, Greg Drake, and Brandi Aldridge

**Secretary:**

The minutes of the August 29, 2013 CEC meeting, presented by email, were passed.

**Treasurer:**

Greg presented the first quarter financial report; Rick made a motion to pass, John seconded and the motion passed.

**Accountability:**

Rick distributed the finalized copy of the Citizen Centric Report 2013/2014. Rick will submit the report by the deadline, September 30, 2013.

**Education:**

John announced that the fall seminar will be held at Cooper Tennis Complex on October 17 and asked for suggestions for topics and speakers. The November member meeting will be a tour of Spring Net Underground on November 14 from 12 to 1:30.

**Communication:**

All information needs to be submitted to Brandie by October 7 to be included in the next newsletter.

**Community Service/Scholarships:**

Pat was able to purchase \$81 in toiletry items for the Rare Breed from pocket change donated during the September member meeting. The member meeting rsvp emails will now contain a community service reminder.

**Early Career:**

Paul wants to establish an "Early Career Corner" in the monthly newsletter and asked for suggestions and ideas. Paul will begin reaching out to the scholarship applicants and encourage them to join AGA.

**Old Business:**

All points need to be entered by September 30, 2013.

**New Business:**

Teresa suggested using the funds allotted for recruitment to purchase gift cards to be given as an incentive to members for bringing a non-member to a meeting.

**Next CEC meeting:** October 31, 2013 -- 12pm

**Meeting adjourned.**

## Ozarks Chapter News

### *Local Ozarks AGA News!*

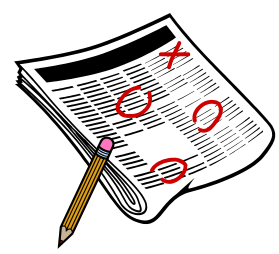
- Way to go Ozarks AGA! At our September Tour, \$81 was collected for Rare Breed, as well as misc toiletry items.
- We had 18 attendees at the September tour of NOAA.
- Ozarks Chapter completed out Citizen Centric Report—Please find it attached in this email.
- Educate yourself! Visit the [Greene County website](#) to learn more about the proposed County Use Tax.
- Remember to **VOTE** in your local elections on November 5th!
- Be sure to look for an “Early Career Corner” in future newsletters!



Ozarks AGA website is back up and running and up to date.  
 Visit us at: [www.ozarksaga.org](http://www.ozarksaga.org)

Accounting Career Opportunities in the Ozarks  
[City Utilities](#)  
 Internal Auditing Co-op

The Ozarks Ledger is a publication of the Ozarks Chapter of The Association of Government Accountants  
**Brandie Fisher, Editor**  
 Deadline for articles: **30th** of each month  
 Send articles to: [bfisher@springfieldmo.gov](mailto:bfisher@springfieldmo.gov)



**Government Financial  
Manager (GFM) Training  
Program-Course 2**

**ONE-TIME  
TRAINING  
OPPORTUNITY**



**AGA Mid-Missouri Chapter**

**Governmental Accounting, Financial Reporting, and Budgeting  
November 12-14, 2013  
Harry S Truman State Office Building  
Room 493/494**

This course covers the general principles of governmental accounting, financial reporting, performance measures and budgeting. It also covers the unique aspects of accounting and reporting for the federal government as well as state and local governments. It is designed for accountants, auditors, budget professionals and controllers in government as well as academics and other professionals who have an interest in government. It is particularly appropriate for newly hired professionals. **This course is also an aid in studying for the Exam 2 in obtaining a CGFM.**

Course materials/study guide will be provided to each participant (an \$89 value!). Course is led by Pete Rose, course developer and prior Professional Certification Board Member. Upon completion of this course, you will have an understanding of:

- the characteristics and differences of the government environment that necessitate the unique accounting and financial reporting;
- the process of setting accounting and financial reporting standards for government entities;
- the bases of accounting and measurement focuses used by governments;
- fiscal accountability;
- exchange and non-exchange transactions;
- the uses of cost accounting in government;
- performance measures;
- budgeting in government;
- accounting and reporting in Federal, State and Local governments, including:
  - determining the financial reporting entity;
  - fund accounting and reporting;
  - government wide accounting and reporting;
  - accounting and reporting for specific transactions.
  - federal budgeting;
  - budgetary accounting;
  - federal financial accounting foundations;
  - the federal financial statements, notes, and supplementary reporting;

**Registration Fee and Information**

A minimum of 20 participants is required before the course can be offered. Space is limited for this program, so register early. The first 10 CGFM candidates to register with payment received will receive a voucher to sit for one part of the CGFM Exam at no charge which is a \$109 savings. The training event is being offered at a cost of \$450 per attendee. This is a bargain at \$18.75 per CPE hour, which includes the \$89 study guides.

No payment is expected at this time—only the commitment to the event. Sign up by contacting Vandee DeVore, at 573-751-1987 or email at [education@midmoaga.org](mailto:education@midmoaga.org) no later than **September 16, 2013**. Our online registration system is not available for this event but credit card payments will be accepted. Meals will not be provided at this event. A hotel room block is being coordinated.

**Refund Policy:** Refunds will not be given on an individual basis, however substitution is allowed. If the course must be cancelled due to lack of participation, a full refund will be given to each individual.