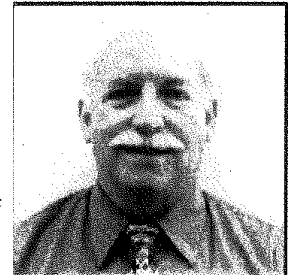


We're on the Web!  
OzarksAGA.org

*May  
2013*

## Message from the President

We are fast approaching the end of our 2013 chapter year with several events/opportunities remaining. The regular monthly meeting of Ozarks AGA for May is being held at the Southwest Power Plant/John Twitty Energy Center beginning at 11:30 on May 21. The meeting will consist of a 20-25 minute tour of the power plant conducted by one engineer for each small group of about 15 people and an hour or less presentation on Springfield's energy generation and outlook by CU personnel for the whole group for 1.5 CPE. Scholarships will be awarded to recipients at this meeting who were unable to attend our April meeting. Additional detail and directions are contained in the newsletter.



**Bob Wells**

Our CEC meeting for May is being held on May 30 at noon in the Busch Building. This will be a joint meeting of current officers and directors with those newly elected who will assume their duties on July 1. All new directors and officers are invited as there will be a discussion on transition of duties. At our last CEC meeting on April 25 the officers and directors who attended SLM in Los Angeles reported on the sessions they attended and brought some good ideas and suggestions for use in our chapter.

American Cancer Society – Relay for life coming up on May 31 is another opportunity for chapter members to assist the chapter in raising funds for this very worthy cause by joining the AGA Relay for Life Team. Remember the chapter is matching up to \$50 for each member that joins the team. Thanks to Pat Monday and others who have donated and volunteered so much time to community service.

I attended Springfield's National Prayer Breakfast yesterday. Representatives from all levels of government were on the program and while listening to each of them, I was reminded how fortunate we are to live in this great country and to be able to enjoy all that we have here in the Ozarks. I look forward to seeing you at our meeting on May 21.

Robert Wells, CPFIM

(417) 523-0161

[Rwells496@spsmail.org](mailto:Rwells496@spsmail.org)

### Inside This Issue:

AGA Scholarship	2
Future Training Dates	3
May 2013 Meeting	4
Report From Treasurer	5
CEC Minutes	6
Local Member News	7
CGFM Test 2 Training	8

See Page 4 for information on our May Meeting!

**Chapter Executive Committee***Advancing Government Accountability.***Chapter President**

Bob Wells

[rwells496@spsmail.org](mailto:rwells496@spsmail.org)

Ph: 417-523-0161

**President-Elect**

Tina McManus

[TinaMcManus@Missouristate.edu](mailto:TinaMcManus@Missouristate.edu)

Ph: 417-836-4232

**Secretary**

Julie Ravenscraft

[julieravenscraft@missouristate.edu](mailto:julieravenscraft@missouristate.edu)

Ph: 417-836-5399

**Treasurer**

Lindsey Brownsberger

[lbrownsberger@bkd.com](mailto:lbrownsberger@bkd.com)

Ph: 417-865.8701 Ext. 23236

**Immediate Past President/****Accountability Chair**

Rick Findley

[rickfindley@yahoo.com](mailto:rickfindley@yahoo.com)

Ph: 417-546-7287

**Director of Education**

John Everest

[jeverest@spsmail.org](mailto:jeverest@spsmail.org)

Ph: 417-523-0519

**Director of Membership**

Justin Hill

[jrhill@greencountymo.org](mailto:jrhill@greencountymo.org)

Ph: 417-868-4084

**Director of Professional Certification**

Jon Cummings

[jcumplings@dmcpa.com](mailto:jcumplings@dmcpa.com)

Ph: 417-882-0904

**Director of Communications**

Brandie Fisher

[bfisher@springfieldmo.gov](mailto:bfisher@springfieldmo.gov)

Ph: 417-864-1852

**Director of Community Services**

Pat Monday

[Pat.Monday@cityutilities.net](mailto:Pat.Monday@cityutilities.net)

Ph: 417-831-8719

**Early Careers Chair**

Lisa McCurry

[lmccurry@springfieldmo.gov](mailto:lmccurry@springfieldmo.gov)

Ph: 417-864-2096

**Website**

Teresa Allen, CGFM

[tallen@springfieldmo.gov](mailto:tallen@springfieldmo.gov)

Check out career  
opportunities on page 7!

## Community Service Information

Congratulations to our \$500 Missouri State University scholarship winner, Nathan Ziegler!

Scholarship recipients who were not able to attend the April meeting are invited to attend the May tour of the John Twitty Energy Center.

## American Cancer Society - Relay for Life May, 31th

**The Ozarks Chapter AGA will match up to \$50 for each AGA member that joins the AGA team.**

(AGA pays \$50 and you pay \$50 - Total \$100 Donations commitments can be paid anytime, before, during, or shortly after the May 31th event)

**AGA will be having a SNACK SALE at the May 21th meeting to raise money for Relay for Life.**

Please contact Pat Monday (831-8719) if you would be willing to donate snacks for the sale or if you need information on Relay for Life.

**Join the AGA Relay for Life Time – AGA Adds Up**

### Interested in the CGFM?

Contact Jon Cummings, CGFM Chair, to inquire about opportunities in our area.



## Regional Training Opportunities

### AGA Audio Conferences

May 8th, 2013— Fraud Prevention  
 May 22nd, 2013—Ethics  
 June 5th—The Key Role of Performance  
 Measurement in Leading your  
 Community, Agency or Organization



☆☆☆☆☆☆☆☆☆☆☆☆☆☆☆☆☆☆☆☆☆☆☆☆☆☆☆☆☆☆☆☆  
**May Meeting**  
 May 21th, 2013  
 Tour: Southwest Power Plant/ John  
 Twitty Energy Center  
 Topic: JTEC Tour  
 1.5 CPE  
 Lunch will be provided  
 Members: \$10  
 Non-Members: \$15  
 RSVP to Justin Hill by 5:00, on  
 Thursday the 16th  
 ☆☆☆☆☆☆☆☆☆☆☆☆☆☆☆☆☆☆☆☆☆☆☆☆☆☆☆☆☆☆☆

## Future Ozarks Chapter Professional Development

Month	Year	Date	Topic/Speaker	Location
June	2012		Summer Break	
July	2012		Summer Break	
August	2012	21st	Ryan Nichols/Tour	Public Safety Ctr
September	2012	11th	CU Water Conservation	CU Training Ctr
October	2012	9th	Prevailing Wages	Mo Career Ctr
November	2012	13th	Fall Seminar	Cooper Tennis Complex
December	2012	11th	Members Social	Springfield Brew Co.
January	2013	29th	Airport Operations/ Financials	Springfield— Branson Airport
February	2013	26th	County/City/School Update	Kraft Admin
March	2013	6th	Spring Seminar	Exec Conf Ctr
April	2013	9th	Scott Harper, Missouri Treasurers Office	Kraft Admin (1359 E. St. Louis)
May	2013	21st	JTEC Power Station Tour— City Utilities	5050 FR 164

**May Meeting – May 21st, 2013 Tuesday 11:30 AM to 1 PM**

**Tour: John Twitty Energy Center (formerly Southwest Power Plant)  
Speaker : Amy Strauss, PE Senior Engineer, City Utilities**

**1.5 CPE**

**Lunch will be provided**

**Members: \$10 - Non-Members: \$15**

John Twitty Energy Center has provided electricity to the customers of City Utilities since 1976. Unit one provided 203 Megawatts of electric power and Unit 2 went into service in 2011 to provide an additional 300 Megawatts of electricity. CU provides electric service to 110,000 customers in a 320 square mile territory.



**5050 W Farm Road 164, Brookline, Mo. 65619**

**Directions:** From W. Sunshine Street and S. Campbell Ave. – Drive west on Sunshine Street/MO-413 (Visual aids at approx. 6 miles: CONOCO station to your left and green Yardwaste Recycling Center sign to your right)  
- Turn LEFT onto S. Farm Rd 115 – Turn left at the “T” to enter parking lot at TJEC

**DRIVE TIME:**

From Sunshine & Campbell - Approx. 6.4 miles – 14 minutes

From Springfield City Hall – Approx. 9.2 miles – 25 minutes

**NOTE:** Only “closed in” shoes can be worn, no heels or sandals as you will be walking on grating. Wear only slacks or jeans on the tour, no dresses or skirts. Purses cannot be taken on the tour so please leave them in the trunk of your vehicle. You will experience coal dust during the tour so you probably will get dust on your clothing so please dress accordingly. Please bring a light jacket to wear during the tour as it may be windy.

## Advancing Government Accountability.

**OZARKS CHAPTER OF AGA  
2012-2013 Statement of Operations**

		4/30/2013
	<b>2012-13</b>	<b>FYTD</b>
<b>Revenues:</b>	<b>Budget</b>	<b>Actual Revenue</b>
Chapter Dues	\$ 350.00	414.94
Monthly meetings	1,750.00	1,190.00
Seminars:		
Fall Seminar	1,800.00	1,153.00
Spring Membership Seminar	7,500.00	3,270.00
Spring Seminar Sponsorships	1,000.00	
Other Revenues:		
Recruiting stipend from National AGA	150.00	150.00
Charity Fundraiser	-	384.00
Misc Revenue	50.00	-
Interest income	50.00	16.54
<b>Total Revenues</b>	<b>\$ 12,650.00</b>	<b>\$ 6,578.48</b>
<b>Expenses:</b>	<b>Projected</b>	<b>FYTD</b>
	<b>Expenses</b>	<b>Actual Expense</b>
Monthly Meeting Expenses:	\$ 1,500.00	881.29
Seminar Expenses:		
Fall Seminar	500.00	155.10
Spring Membership Seminar-Expenses	1,700.00	1,474.12
Spring Membership Seminar-Dues	4,750.00	2,320.00
Community Service Expense	600.00	-
Scholarships:		
Educational (Post Secondary Ed) Scholarships	4,000.00	2,700.00
CGFM (Member) scholarships	400.00	-
PDC - CEC Travel Stipend	1,875.00	447.26
Membership Drive Expense	150.00	35.00
Replenish speaker gifts	300.00	-
Misc Expense	300.00	775.73
<b>Total Expenses</b>	<b>\$ 16,075.00</b>	<b>\$ 8,788.50</b>
Change In Fund Balance:	Projected	Actual
Beginning	8,515.85	8,515.85
Projected Revenue	12,650.00	6,578.48
Estimated Expenses	(16,075.00)	(8,788.50)
Projected Reduction in Fund Balance	(3,425.00)	(2,210.02)
	5,090.85	6,305.83

**AGA - Your Best Connection for Quality, Affordable Continuing Education**



## CEC Minutes

**April 25, 2013**      **CEC Meeting**

**12:00 PM – Busch Building – 2<sup>nd</sup> floor West conference room**

**Attendance:**      Pat Monday, Bob Wells, Tina McManus, Paul Essel, Debra Burling, Greg Drake, Justin Hill

**Secretary:**

The minutes from the last meeting were distributed by e-mail.

Tina motioned to approve, Pat 2<sup>nd</sup>, passed unanimously.

**Treasurer:**

The treasurer's report was not available this month.

Bob will initiate the process to change signature cards with bank to reflect new officers for 2013-2014.

**Communication:**

Committee reviewed and discussed agencies working towards Citizen Centric Reporting.

Updates are needed to our website. We could use help/volunteers in this regard.

**Early Careers:**

Paul Essel shared tips from the SLM conference regarding how we might better encourage young people to participate in our organization. It was reiterated that members should encourage students to come to our monthly meetings. They have the opportunity to attend all for free.

**Community Service:**

We have 4 signed up for the AGA booth at relay for life. AGA will sponsor any member \$50 for registering (registration requires the individual to raise a minimum of \$100 in sponsorships).

**Education:**

Discussed logistics and security for the May 21 tour of the Power Plant

It was decided that C.U. could easily provide additional education to attendees, and therefore we could offer 1.5 hours of CPE to our members at this event. The event will still begin at noon, and the cost will be the same as usual. Members could leave after 1 hour if needed, but those that stay the entire duration would be awarded the additional .5 hrs CPE.

**CGFM:**

We need to be sure and recognize members as they make accomplishments in this area.

**Membership:**

Tina outlined additional information and membership challenges posed to leadership at the SLM.

In order to encourage suspended members to renew, and potential members to join, Pat suggested we use the Fall Seminar as an incentive.

Justin motioned to offer the 4 hour Fall seminar for free to those who renew/join between now and May 31. They could either pay their dues on-line on the National Website, or pre-register for the Fall Seminar with us for \$95 (the decided upon non-member rate for this seminar). This motion was 2<sup>nd</sup> by Tina and passed unanimously.

**Next CEC meeting will be Thursday, May 30<sup>th</sup>, 2013 from 12:00 to 1:00 PM in the 2<sup>nd</sup> floor West Busch Building conference room.**

**Meeting Adjourned**

Bob motioned to adjourn, Justin 2<sup>nd</sup>, All were in favor. 1:04 p.m.

# Ozarks Chapter News

## 2013-2014 CEC Officers

- ★ **President— Tina McManus**
- ★ President Elect—Debra Burling
- ★ Treasurer—Greg Drake
- ★ **Membership Chair/Historian—Justin Hill**
- ★ **Newsletter Editor—Brandie Fisher**
- ★ **Education Chair—John Everest**
- ★ Secretary—Brandi Richmond
- ★ **Community Service/Awards—Pat Monday**
- ★ **CGFM Chair—Jon Cummings**
- ★ Early Career Chair—Paul Essel
- ★ **Webmaster—Teresa Allen**
- ★ **Accountability Chair—Rick Findley**



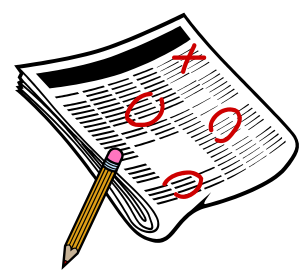
★ \*Returning Officers in **bold**

Ozarks AGA website is back up and running and up to date.  
 Visit us at: [www.ozarksaga.org](http://www.ozarksaga.org)

The Ozarks Ledger is a publication of the Ozarks Chapter of The Association of Government Accountants  
**Brandie Fisher, Editor**  
 Deadline for articles: **30th** of each month  
 Send articles to: [bfisher@springfieldmo.gov](mailto:bfisher@springfieldmo.gov)

Accounting Career Opportunities in the Ozarks

- [Missouri State University](#)  
Accounting Specialist
- [Ozark Technical College](#)  
P/T Cashier
- [City of Springfield](#)  
Internal Auditor



Government Financial  
Manager (GFM) Training  
Program-Course 2

**ONE-TIME  
TRAINING  
OPPORTUNITY**



AGAMid-Missouri Chapter

**Governmental Accounting, Financial Reporting, and Budgeting**  
**November 12-14, 2013**  
**Harry S Truman State Office Building**  
**Room 498/494**

This course covers the general principles of governmental accounting, financial reporting, performance measures and budgeting. It also covers the unique aspects of accounting and reporting for the federal government as well as state and local governments. It is designed for accountants, auditors, budget professionals and controllers in government as well as academics and other professionals who have an interest in government. It is particularly appropriate for newly hired professionals. *This course is also an aid in studying for the Exam 2 in obtaining a CGFM.*

Course materials/study guide will be provided to each participant (an \$89 value!). Course is led by Pete Rose, course developer and prior Professional Certification Board Member. Upon completion of this course, you will have an understanding of:

- the characteristics and differences of the government environment that necessitate the unique accounting and financial reporting;
- the process of setting accounting and financial reporting standards for government entities;
- the bases of accounting and measurement focuses used by governments;
- fiscal accountability;
- exchange and non-exchange transactions;
- the uses of cost accounting in government;
- performance measures;
- budgeting in government;
- accounting and reporting in Federal, State and Local governments, including:
  - determining the financial reporting entity;
  - fund accounting and reporting;
  - government wide accounting and reporting;
  - accounting and reporting for specific transactions.
  - federal budgeting;
  - budgetary accounting;
  - federal financial accounting foundations;
  - the federal financial statements, notes, and supplementary reporting;

**Registration Fee and Information**

A minimum of 20 participants is required before the course can be offered. Space is limited for this program, so register early. The first 10 CGFM candidates to register with payment received will receive a voucher to sit for one part of the CGFM Exam at no charge which is a \$109 savings. The training event is being offered at a cost of \$450 per attendee. This is a bargain at \$18.75 per CPE hour, which includes the \$89 study guides.

No payment is expected at this time—only the commitment to the event. Sign up by contacting Vandee DeVore, at 573-751-1987 or email at [education@midmoaga.org](mailto:education@midmoaga.org) no later than **September 16, 2013**. Our online registration system is not available for this event but credit card payments will be accepted. Meals will not be provided at this event. A hotel room block is being coordinated.

**Refund Policy:** Refunds will not be given on an individual basis, however substitution is allowed. If the course must be cancelled due to lack of participation, a full refund will be given to each individual.