



# Mid Missouri Chapter

## A REPORT TO OUR MEMBERS

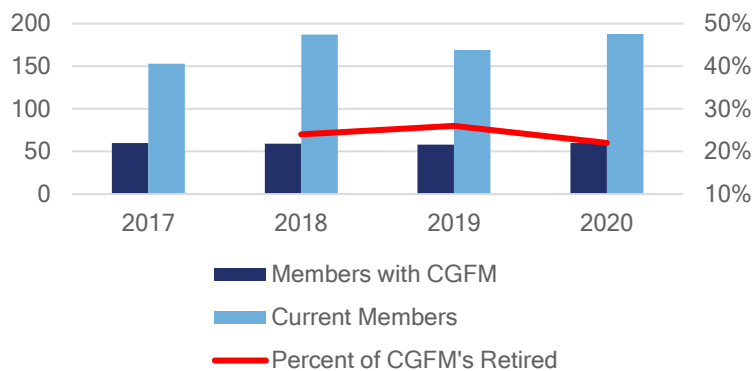


Pictured: The Missouri State Capitol. The Capitol is a key symbol for our members since a large percentage of the membership work for the state government. Both our Chapter and the State Capitol reside in Jefferson City, Missouri.

The Mid-Missouri Chapter was founded on July 11, 1973, by John Aschroft. Our Chapter was the 42<sup>nd</sup> of 92 Chapter charters, with the first charter done in 1950. Our Chapter is in the top 20% for the size of our Chapter membership.

### Our Membership

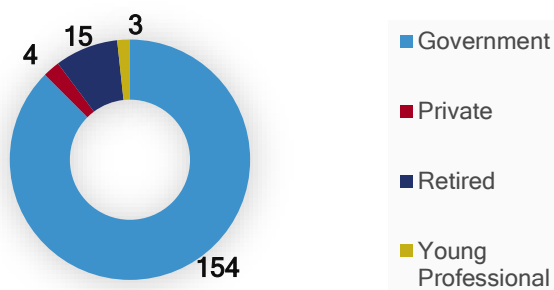
CGFM and Our Membership



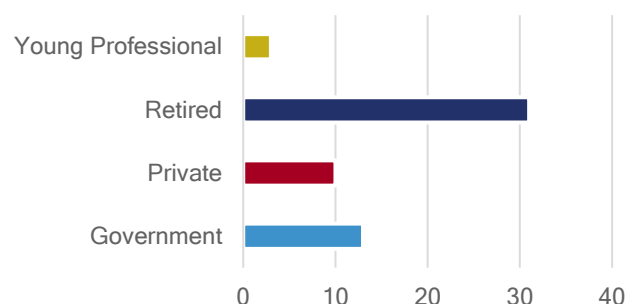
### CGFM Month

Every year, AGA celebrates the Certified Government Financial Manager, CGFM, during March which demonstrates competency in governmental accounting, internal controls, government budgeting and more. This year, the Mid-Missouri Chapter received [proclamations](#) from the Missouri Governor Michael L. Parson and the Jefferson City Mayor Carrie Tergin.

### Number of Members



### Average Years of Membership



## Awards and Accomplishments

During the PDT20, held virtually due to COVID-19, the Mid-Missouri Chapter received the highest award, the Platinum Award. This is the final year for the National Chapter Recognition Program.

Bob Snyder was awarded Volunteer of the Year. Bob received this honor for his dedication to the Mid-Missouri Chapter Board and his dedication to the CGFM program.



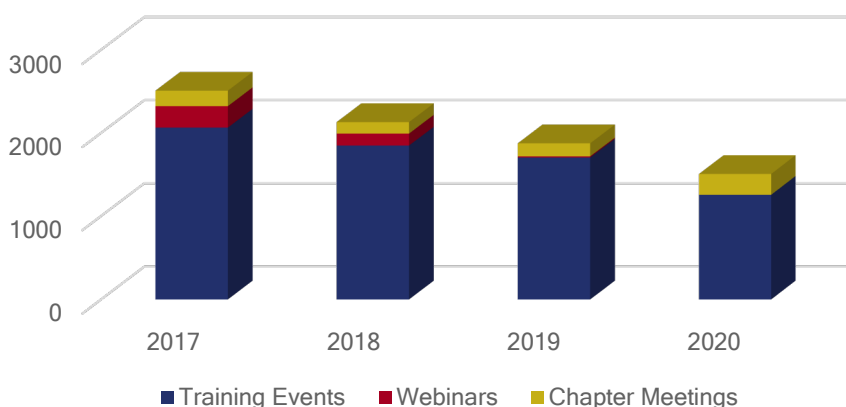
## CCR Certificate of Excellence

The Chapter also was recognized for the 2019 Report to our Members, or the Chapter Citizen Centric Report, with a Certificate of Excellence. The Chapter's CCR provides transparent reporting to our members, citizens of Missouri, and interested parties within the AGA family. The goal of the CCR is an easy to read report that promotes our message and accomplishments over the last year.

To view an electronic version of this year's report, please go to our website at <https://midmoaga.org/index.php>. Find prior year reports at <https://midmoaga.org/History> Archives.



## Continuing Education Credits Provided



Pictured above: Members attending the February Past Presidents Meeting.

# Chapter Finances

Revenue, Expenditures and a Budget Comparison (In Dollars)

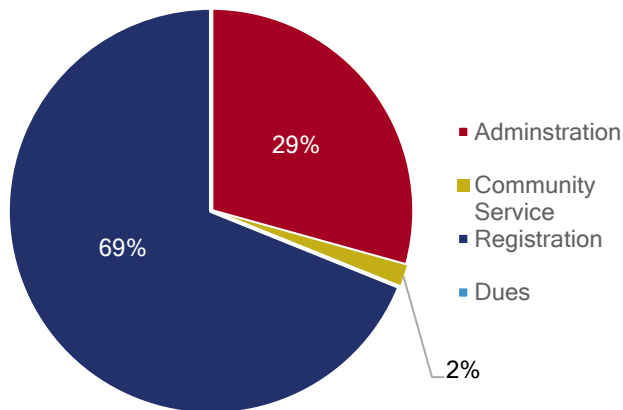
## Revenue

	2017	2018	2019	2020
Admin	122	8	19	9,540
Community Service	250	52	463	580
Education	39,170	30,970	21,768	22,415
Dues	-	-	-	-
Total	39,542	31,030	22,250	32,535

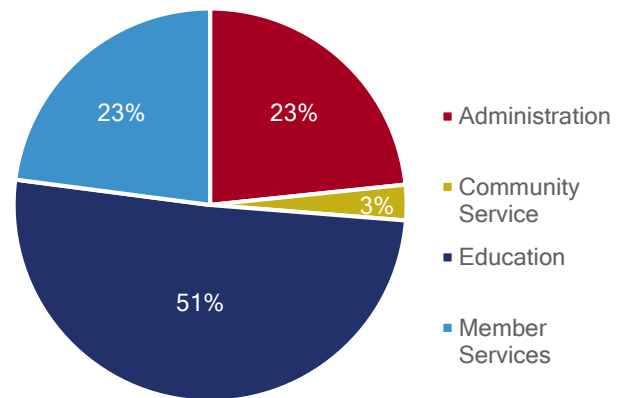
## Expenditures

	2017	2018	2019	2020
Admin	5,459	6,851	8,852	5,048
Community Service	250	287	453	630
Education	20,281	16,033	14,814	10,985
Members	9,936	9,300	6,065	4,960
Total	35,926	32,471	30,184	21,623

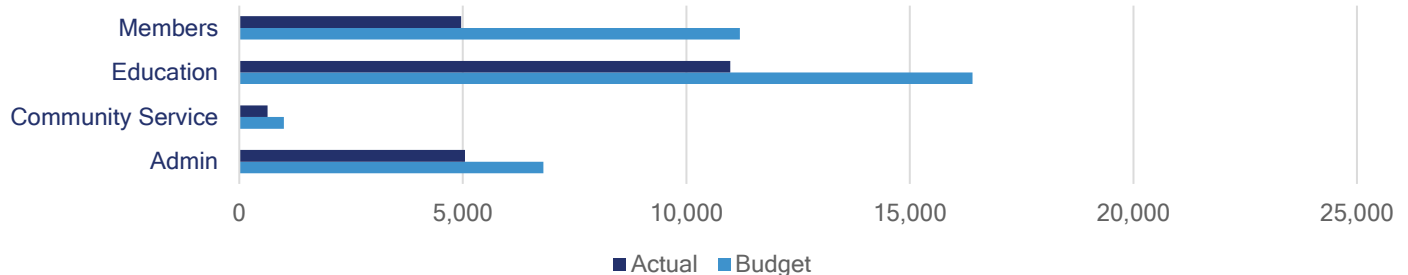
2019-2020 Revenue



2019-2020 Expenditures



2019-2020 Expenditures: Budget Compared to Actuals



The Mid-Missouri Chapter strives to have an independent review of the Chapter's Finances by volunteer members. At the time publication, the review for 2019-2020 has not been completed, but is scheduled.

## Challenges and Future Plans

The Mid-Missouri Chapter has a rich history of being a strong, large chapter. However, in recent years, we have seen a steady decline in the number of members joining and renewing annually. The challenges of COVID-19 only exacerbated the situation.

Like many other chapters, the impact of stay-at-home orders, social distancing, and disruptions in state budget shortages, forced our chapter to forgo planned educational events. Additionally, the Chapter did not have electronic infrastructure in place to convert our education events to virtual. The cancellation of our annual two-day training event has put a significant strain on our budget; therefore, the board decided to not reinvest the full amounts of some certificates of deposit at the time of renewal (see the Revenue Chart, Admin line).

The State of Missouri employs 73% of our Chapter members. The State has contracted with *LinkedIn Learning* to provide a corporate pricing structure for all State employees to have unlimited access to all material on *LinkedIn Learning's* platform. With that in place, many supervisors are redirecting their limited budget for training to other critical needs instead of paying for AGA memberships and training events.

We have also been challenged with incomplete boards since we have not been able to find enough volunteers to complete the board. That has caused a decline in the fresh topics, preparation, and presentation of training on a regular basis.

The board has met several times to discuss options on offering training events in a virtual setting. The board is contemplating the purchase of conference related software to aid in the engagement and management of virtual events. This next year offers everyone new opportunities for personal growth in our technological experiences while doing our part to stay safe and socially distant!

### 2020-2021 Board

Chapter President  
Danielle Weed  
[info@midmoaga.org](mailto:info@midmoaga.org)

Chapter President-Elect  
Vacant

Past President, Communications, & NCC  
Representative  
Christina Freeman  
[communications@midmoaga.org](mailto:communications@midmoaga.org)

CGFM  
Lewis "Bob" Snyder, CGFM

Treasurer  
Robin Burkhart

Education  
Mark Runyan  
[education@midmoaga.org](mailto:education@midmoaga.org)

Membership  
Rachel Hogrefe  
[membership@midmoaga.org](mailto:membership@midmoaga.org)

Community Service  
Vacant

Secretary & Accountability Chair  
Tracy Farris, CGFM

We want to hear from you!  
Please let us know if you would like our Chapter to help prepare a Citizen Centric report for your organization. We are also interested in any feedback on our report. Please contact us at [info@midmoaga.org](mailto:info@midmoaga.org), find us on our website at <http://midmoaga.org>, on Facebook as the Mid-Missouri AGA Chapter, or on LinkedIn as Mid-MO AGA Chapter.

