



Mid Missouri Chapter

A REPORT TO OUR MEMBERS

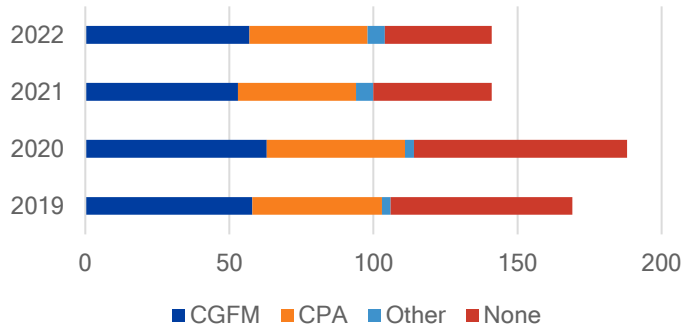


The Mid-Missouri Chapter was founded on July 11, 1973, by John Ashcroft. Our Chapter was the 42nd of 92 Chapter charters, with the first charter done in 1950. The Chapter's mission is to advance accountability, transparency, and leadership by promoting education, certification, innovation, and collaboration across all levels of government and to stakeholders.

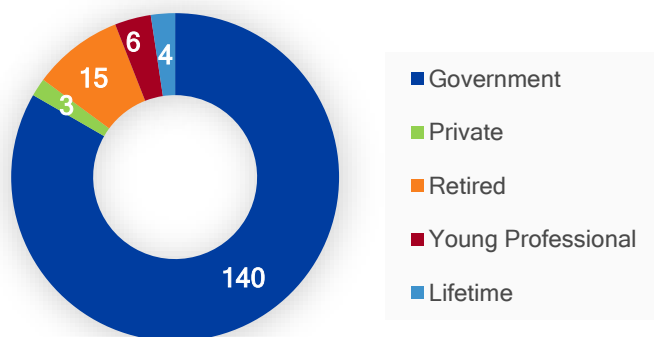
This past year has been all about change. We have updated our bylaws, our policy and procedures, our financial report, and the methods for delivering events. Additionally, the board worked hard to bring fresh, new board members and their perspectives to the Chapter. We held several study sessions for members seeking their CGFM. Finally, the Chapter participated in the national rebranding of AGA. It has been a great year as we return to the "new normal".

Our Membership

CGFM and Other Licenses



Membership Types



2021-2022 Chapter Officers

President	Danielle Weed
President-Elect	Jamie Pine
Immediate Past-President	Vandee DeVore
Secretary	Sara Hagenhoff
Treasurer	Tracy Farris
Education Director	Mark Runyan
Communication	Matthew Storm
Membership	Rachel Hogrefe
Certification	Bob Snyder
Community Service	Christina Freeman

Contact Us

Email info@midmoaga.org

Website midmoaga.org



[@Mid-Missouri AGA Chapter](https://www.facebook.com/Mid-Missouri-AGA-Chapter)



[@Mid-MO AGA Chapter](https://www.linkedin.com/company/Mid-MO-AGA-Chapter)

Awards and Accomplishments

The Chapter achieved a Gold Award for Achievements in Chapter Excellence (ACE) for Chapter Operations.

Our Citizen Centric Report (CCR), our annual report, also received the Citizen-Centric Reporting Recognition of Excellence.

The Chapter also awarded Scholarships to Kathryn Wilson and Elsie Bax. Congratulations ladies!



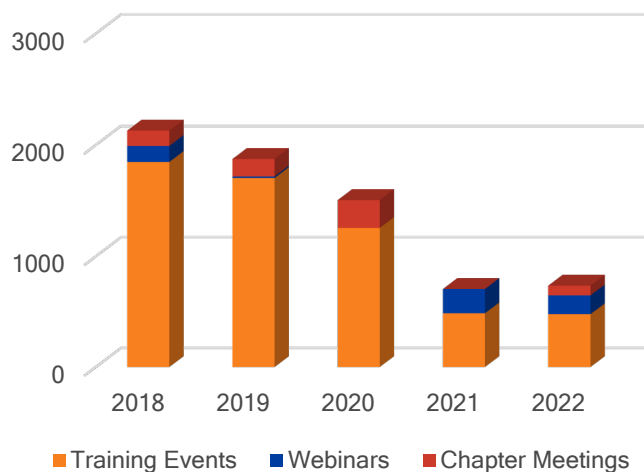
Pictured: President Elect Jamie Pine and Skip Eno Scholarship awardees Elsie Bax and Kathryn Wilson

Performance Measures

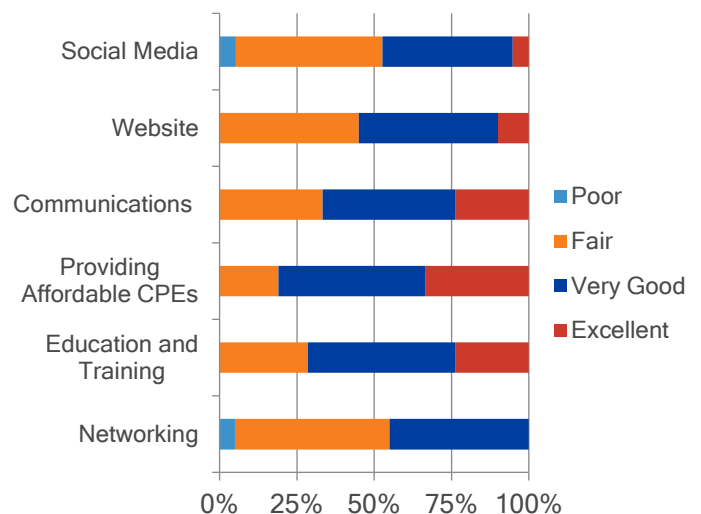


Program Year:	2021-2022	2020-2021	2019-2020
New Members	23	15	14
Change in Number of Chapter CGFMs	4	(10)	5
CPE Credits Sponsored	40	28	31
Student Scholarships Awarded	2	2	2
Average Monthly Meeting/Webinar Attendance	12	14	27
Average Training Event Attendance	12	36	41

Continuing Education Credits Provided



Membership Survey Results



Chapter Finances

Revenue, Expenditures and a Budget Comparison (In Dollars)

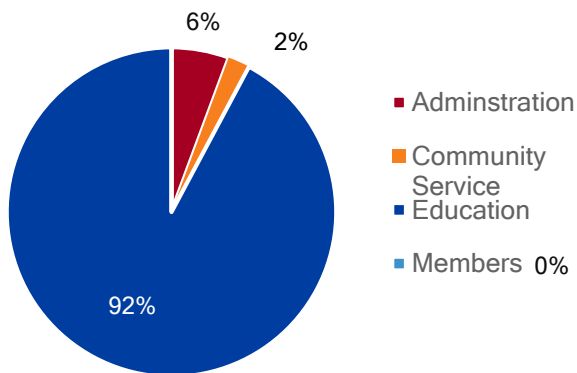
Revenue

	2019	2020	2021	2022
Admin	\$ 19	\$ 9,540	\$ 5	\$ 710
Community Service	463	580	220	269
Education	21,768	22,415	12,054	11,578
Members	-	-	-	-
Total	\$22,250	\$32,535	\$12,279	\$12,557

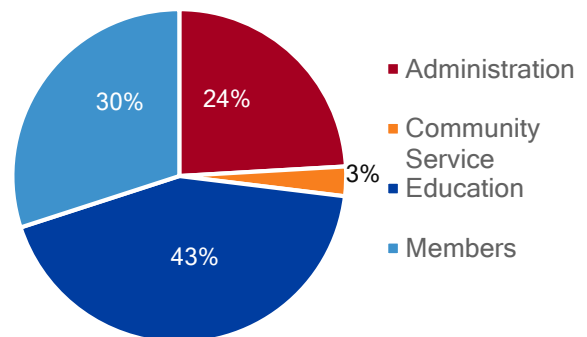
Expenditures

	2019	2020	2021	2022
Admin	\$ 8,852	\$ 5,048	\$ 4,007	\$3,113
Community Service	453	630	220	369
Education	14,814	10,985	3,147	5,568
Members	6,065	4,960	4,404	3,876
Total	\$30,184	\$21,623	\$11,828	\$12,926

2021-2022 Revenue



2021-2022 Expenditures



Revenue and Expenditures Notes

Program Year 2021-2022 revenue and expenditures started to level-out and reflect more of our "new normal" post COVID. While we returned to offering more CPE, it is based on a combination of both virtual sessions and in person sessions. However, we did not have two-day event this year. Program Year 2020 revenues for the Admin category are significantly higher resulting from a withdrawal from the Chapter CD to cover fixed costs for website and email hosting services until chapter event attendance was anticipated to re-bound.

Independent Review

The Mid-Missouri Chapter strives to have an independent review of the Chapter's Finances by volunteer members. At the time publication, the review for 2021-2022 has been scheduled but not yet completed. The Mid-Missouri Chapter has internal control procedures in place to safeguard funds and provide efficient and effective management of assets. The financial statements presented were reconciled and the complete financial reports can be found at https://midmoaga.org/Financial_Reports.

Challenges and Future Plans

Communications: The Chapter is scheduled to roll out an updated website in the fall. The Communications Director is planning to issue bi-monthly newsletters with a new condensed format. We continue to post the financial reports and meeting minutes on our website for your review.

Education: The Chapter has planned to incorporate both in-person and virtual training during this program year. The Education Director is working to publish an annual calendar to the members with the date, generic event type, and general subject matter. The Chapter continues to focus on more technical topics to offset the State's use of LinkedIn Learning platform for training. The Chapter intends to host a two-day training event in the fall. The goal is for education events to be successful enough to begin to restore the previous balance in the CD to pre-2020 levels.

Professional Certification: The Chapter plans to continue to offer the study sessions, update our "loan" program with the latest versions of study guides, and publish regular articles in the newsletter to address both current and future CGFM members.

Administration: The Chapter is focusing on reducing administrative costs of the Chapter. They are looking into alternative accounts for their email accounts and simplifying their merchant accounts.

Membership: The board is researching new ways to engage our membership, reaching out to non-members to discuss the benefits of AGA, and reward our membership for their participation and activity. The Chapter is looking at new ways to engage the local student, professor, and young professional populations. The Chapter is considering

2022-2023 Board

Chapter President

Jamie Pine

president@midmoaga.org

Chapter President-Elect

Aaron Libbert

president@midmoaga.org

Past President

Danielle Weed

pastpresident@midmoaga.org

Communication

Amy Blankenship

communications@midmoaga.org

Professional Certification

Lewis "Bob" Snyder, CGFM

cgfm@midmoaga.org

Treasurer, Accountability Chair

Tracy Farris

treasurer@midmoaga.org

Education

Mark Runyan

education@midmoaga.org

Membership

Rachel Hogrefe

membership@midmoaga.org

Secretary

Sara Hagenhoff, CGFM

secretary@midmoaga.org

Community Service

Melody Freeman, CGFM

communityservice@midmoaga.org

presentations at job fairs and governmental accounting classes.

Please let us know if you would like our Chapter to help prepare a Citizen Centric report for your organization. We are also interested in any feedback on our report. Please contact us at info@midmoaga.org or find us on our website at <http://midmoaga.org>.