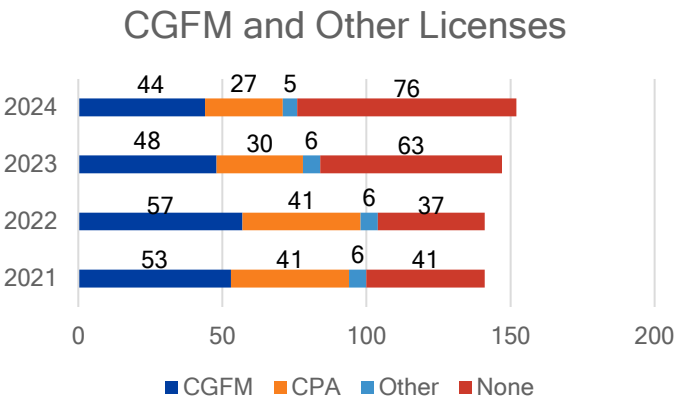




The Mid-Missouri Chapter was founded on July 11, 1973, by John Ashcroft. Our Chapter was the 42nd of 92 Chapter charters, with the first charter done in 1950. The Chapter’s mission is to advance accountability, transparency, and leadership by promoting education, certification, innovation, and collaboration across all levels of government and to stakeholders.

The board has worked hard to recruit new leadership. As the Chapter looks to the future, it needs fresh ideas and perspectives to keep the Chapter relevant. The Chapter continues to struggle with membership retention and event attendance. The main employer of Chapter members is undergoing a major digital transformation which impacted attendance. New leaders have brought fresh ideas to the table that are being incorporated into our new normal.

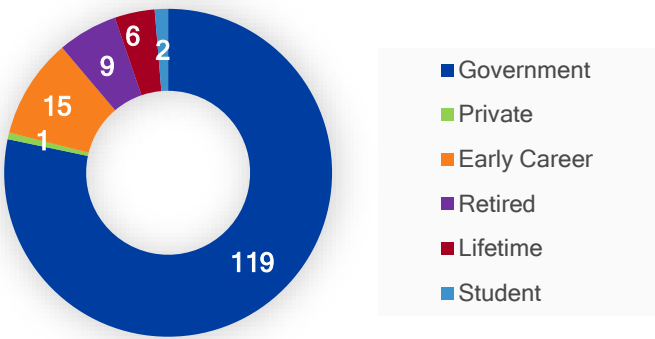
Our Membership



2024 Chapter Officers

President	Whitney Pickerell
President-Elect	Whitney Pickerell
Immediate Past-President	Jamie Pine
Secretary	Sara Hagenhoff
Treasurer	Tracy Farris
Education Director	Mark Runyan
Communication	Vandee DeVore
Membership	Rachel Hogrefe
Certification	Bob Snyder
Community Service	Rachel Hogrefe

Membership Types



Contact Us

Email info@midmoaga.org
Website midmoaga.org

 [@Mid-Missouri AGA Chapter](#)

 [@Mid-MO AGA Chapter](#)

Awards and Scholarships

Achievements in Chapter Excellence (ACE) for Chapter Operations: Gold Award

Communications Award for our website, newsletter and communication to members

Citizen Centric Report (CCR): Citizen-Centric Reporting Recognition of Excellence

Scholarships awarded: Alijah Jackman and Cole Peters. Congratulations!

Volunteer of the Year awarded to Rachel Hogrefe

Community Service events

Chapter members participated in several community service events this year including bell ringing, a trivia night, bake sales, and raffles.

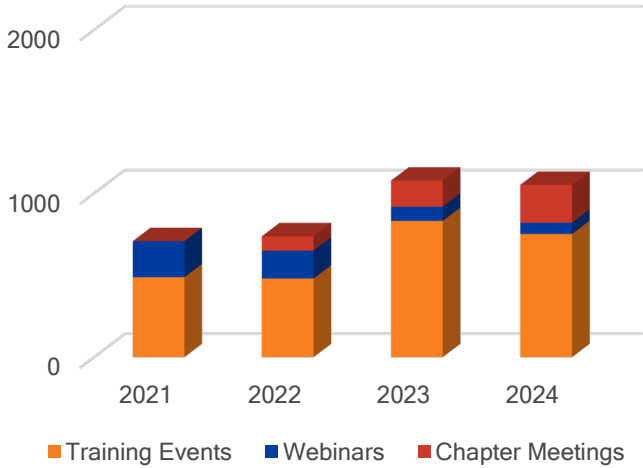


Performance Measures



Program Year:	2024	2023	2022	2021
New Members	23	13	23	15
Change in Number of Chapter CGFMs	(4)	(9)	4	(10)
CPE Credits Sponsored	38	40	40	28
Student Scholarships Awarded	2	2	2	2
Average Monthly Meeting/Webinar Attendance	7	9	12	14
Average Training Event Attendance	26	52	30	36

Continuing Education Credits Provided



The Chapter had great attendance at the PDT 2024 event hosted by AGA in Denver, CO! It was wonderful to see new and old friends. We encourage all members to attend a national level event to experience the variety of speakers, topics, and networking opportunities.



Chapter Finances

Revenue, Expenditures and a Budget Comparison (In Dollars)

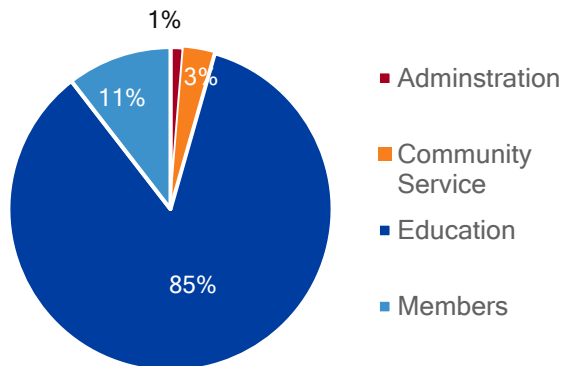
Revenue

	2021	2022	2023	2024
Admin	\$ 5	\$ 710	\$ 295	\$ 271
Community Service	\$ 220	\$ 269	\$ 414	\$ 648
Education	\$12,054	\$11,578	\$20,025	\$17,710
Members	\$ 0	\$ 0	\$ 0	\$2,181
Total	\$12,279	\$12,557	\$20,734	\$20,810

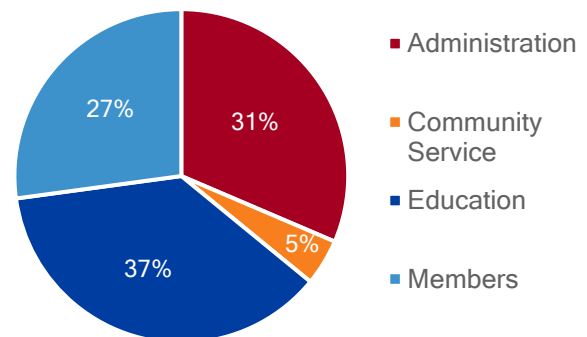
Expenditures

	2021	2022	2023	2024
Admin	\$ 4,007	\$ 3,113	\$ 6,137	\$ 5,024
Community Service	\$ 220	\$ 369	\$ 510	\$ 718
Education	\$ 3,147	\$ 5,568	\$ 5,743	\$ 5,904
Members	\$ 4,404	\$ 3,876	\$ 5,665	\$ 4,340
Total	\$11,828	\$12,926	\$18,055	\$15,986

2024 Revenue



2024 Expenditures



Revenue and Expenditures Notes

Program Year 2023-2024 revenue and expenditures are more aligned to pre-COVID levels. While we continue to offer around 40 CPE annually, it is now based on a combination of both virtual and in-person sessions. The new revenue source for Members in 2024 is the result of resuming a Chapter membership fee of \$10. This was resumed to offset the rising costs of website maintenance and credit card fees. Upgrading our website and moving to an annual website service fee, for a discount, caused the spike in the 2023 Administrative expenditures. Travel costs for Chapter leaders to attend the National PDT continues to be the other main Administrative cost.

Independent Review

The Mid-Missouri Chapter has internal control procedures in place to safeguard funds and provide efficient and effective management of assets. Additionally, our financial review was completed with no issues. The financial statements presented were reconciled and the complete financial report and review can be found at https://midmoaga.org/Financial_Reports.

Challenges and Future Plans

Communications: The Chapter needs to determine why our communications to members continue to show as unread. We also need to educate our members on when/how to update their contact information to ensure they continue to get our messaging after change jobs.

Education: We continue to face the challenge of many members involvement in the statewide digital transformation of the budget, financial, procurement, payroll, and human resources systems project. This project is pulling our members into significant hours of meetings which is negatively impacting their availability to attend our trainings. We are planning to try some new training locations and networking events to entice more attendance.

Professional Certification: The Chapter is working with other regional chapters to promote a virtual study group. The Chapter needs to remind our members of the scholarship opportunities for when they pass the certification tests.

Administration: The Board will evaluate the success of the new membership participation program to determine if the program should be modified, continued or disbanded. We are also working to modernize our scholarship program. The board plans to pursue more sponsorships to foster relationships between our corporate and local partners with our members.

Membership: The Chapter continues to see a relatively stagnant membership growth due to large levels of retirement and little to no retention of new members. The State's LinkedIn Learning and the new MOVERS Learn training platforms continues to impact the desire for membership in professional organizations. The Chapter is trying

2025 Board

Chapter President
Whitney Pickerell
president@midmoaga.org

Chapter President-Elect
Whitney Pickerell
president@midmoaga.org

Past President
Jamie Pine
pastpresident@midmoaga.org

Communication
Tiffany Hader
communications@midmoaga.org

Professional Certification
Lewis "Bob" Snyder, CGFM
cgfm@midmoaga.org

Treasurer, Accountability Chair, &
Webmaster
Tracy Farris, CGFM
treasurer@midmoaga.org

Education
Mark Runyan
education@midmoaga.org

Membership
Rachel Hogrefe
membership@midmoaga.org

Secretary
Tatum Husong
secretary@midmoaga.org

Community Service
Sharlet Kroll
communityservice@midmoaga.org

to diversify our recruiting efforts to more local governments and schools.

Please let us know if you would like our Chapter to help prepare a Citizen Centric report for your organization. We are also interested in any feedback on our report. Please contact us at info@midmoaga.org or find us on our website at <https://midmoaga.org>.